

Broome County

SUNY  **BROOME**

Adopted
BUDGET
FY 2020 - 2021

SUNY Broome
2020-21 Budget
Adopted
Table of Contents

2020-2021 Officials.....	1
SUNY Broome Organizational Structure.....	2
Broome County Legislative Budget Adoption Resolution.....	3
County Executive Budget Message.....	5
2020-2021 Proposed and Recommended Operating Budget.....	7
SUNY Broome Proposed Budget Highlights.....	9
Full-Time Positions Authorized by SUNY Broome Board.....	15

This Page

Intentionally Left Blank

2020-2021 Officials

SUNY Broome Officials

Dr. Kevin E. Drumm	President
Dr. Penny Haynes	Executive Vice President of Academic Affairs
Michael J. Sullivan	Vice President for Administrative & Financial Affairs
Dr. Carol A. Ross-Scott	Vice President for Student Development & Chief Diversity Officer
Jesse Wells	Executive Enrollment Management Officer
Dr Kimberly B McLain	Interim Dean of Institutional Effectiveness & Enrollment Planning
Lynn Fedorchak	Human Resources Officer

SUNY Broome Board of Trustees

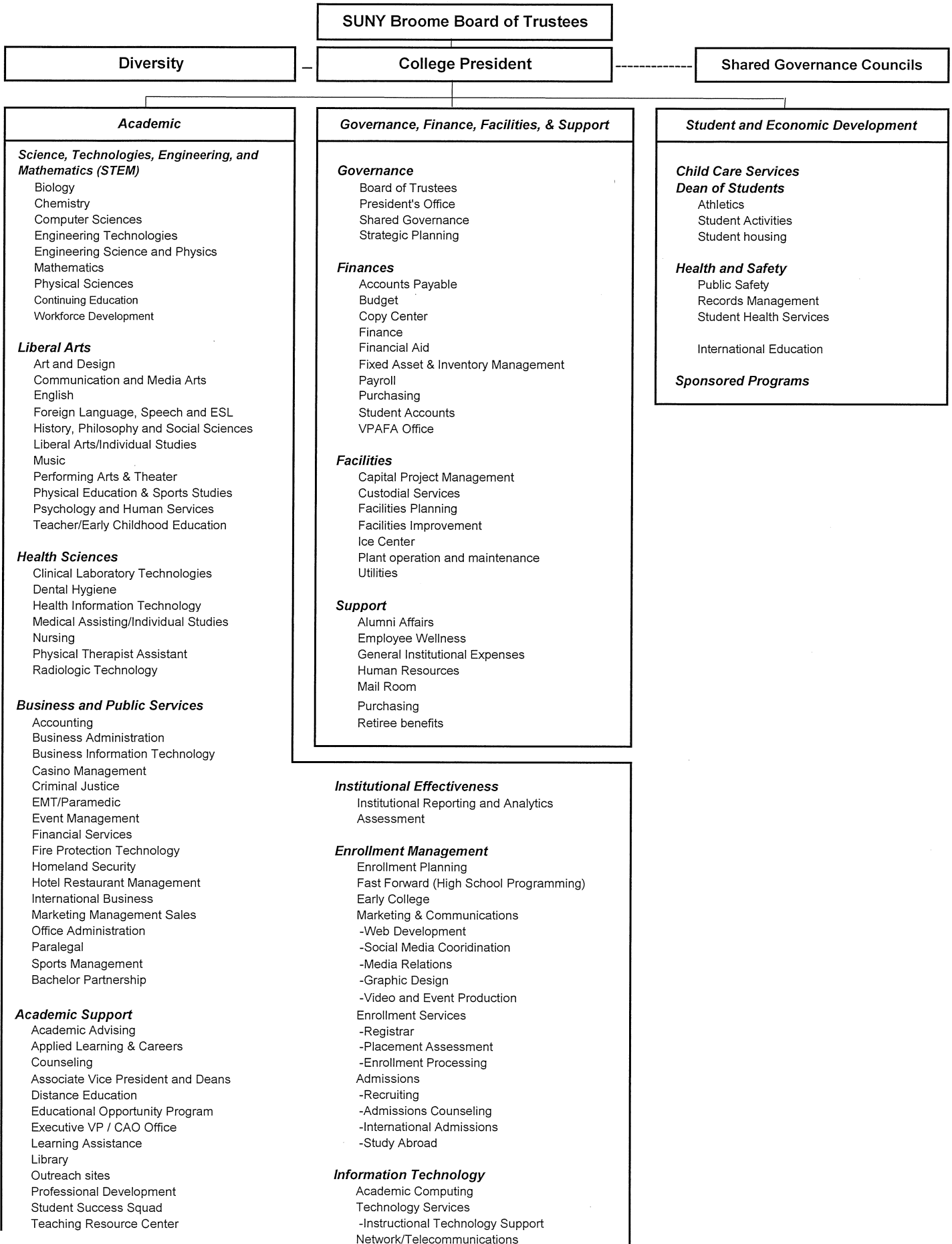
Marc Newman	Chairperson
Anthony Paniccia	Vice Chairperson
Jason Andrews	
Sharon Ball	
Margaret M. Coffey	
Kathy Connerton	
Barbara Fiala	
James Orband	
Nicholas G. Serafini, Jr.	
Peter Kennedy	Student Trustee

Broome County Executive Jason T. Garnar

Broome County Legislature

Steven J. Flagg	1 st District	Matthew J. Hilderbrant	9 th District
Scott D. Baker	2 nd District	Cynthia L. O'Brien	10 th District
Kelly F. Wildoner	3 rd District	Susan V. Ryan	11 th District
Kim Myers	4 th District	Richard P. Balles	12 th District
Daniel J. Reynolds	5 th District, Chairman	Bob Weslar	13 th District
Greg W. Baldwin	6 th District	Mary A. Kaminsky	14 th District
Matthew J. Pasquale	7 th District	Mark R. Whalen	15 th District
Jason E. Shaw	8 th District		

SUNY Broome Community College Organizational Chart



SUNY Broome Board of Trustees

Diversity

College President

Shared Governance Councils

Academic

- Science, Technologies, Engineering, and Mathematics (STEM)**
 Biology
 Chemistry
 Computer Sciences
 Engineering Technologies
 Engineering Science and Physics
 Mathematics
 Physical Sciences
 Continuing Education
 Workforce Development
- Liberal Arts**
 Art and Design
 Communication and Media Arts
 English
 Foreign Language, Speech and ESL
 History, Philosophy and Social Sciences
 Liberal Arts/Individual Studies
 Music
 Performing Arts & Theater
 Physical Education & Sports Studies
 Psychology and Human Services
 Teacher/Early Childhood Education
- Health Sciences**
 Clinical Laboratory Technologies
 Dental Hygiene
 Health Information Technology
 Medical Assisting/Individual Studies
 Nursing
 Physical Therapist Assistant
 Radiologic Technology
- Business and Public Services**
 Accounting
 Business Administration
 Business Information Technology
 Casino Management
 Criminal Justice
 EMT/Paramedic
 Event Management
 Financial Services
 Fire Protection Technology
 Homeland Security
 Hotel Restaurant Management
 International Business
 Marketing Management Sales
 Office Administration
 Paralegal
 Sports Management
 Bachelor Partnership
- Academic Support**
 Academic Advising
 Applied Learning & Careers
 Counseling
 Associate Vice President and Deans
 Distance Education
 Educational Opportunity Program
 Executive VP / CAO Office
 Learning Assistance
 Library
 Outreach sites
 Professional Development
 Student Success Squad
 Teaching Resource Center

Governance, Finance, Facilities, & Support

- Governance**
 Board of Trustees
 President's Office
 Shared Governance
 Strategic Planning
- Finances**
 Accounts Payable
 Budget
 Copy Center
 Finance
 Financial Aid
 Fixed Asset & Inventory Management
 Payroll
 Purchasing
 Student Accounts
 VPAFA Office
- Facilities**
 Capital Project Management
 Custodial Services
 Facilities Planning
 Facilities Improvement
 Ice Center
 Plant operation and maintenance
 Utilities
- Support**
 Alumni Affairs
 Employee Wellness
 General Institutional Expenses
 Human Resources
 Mail Room
 Purchasing
 Retiree benefits

Student and Economic Development

- Child Care Services**
Dean of Students
 Athletics
 Student Activities
 Student housing
- Health and Safety**
 Public Safety
 Records Management
 Student Health Services
- International Education
- Sponsored Programs**

Institutional Effectiveness

- Institutional Reporting and Analytics
 Assessment
- Enrollment Management**
 Enrollment Planning
 Fast Forward (High School Programming)
 Early College
 Marketing & Communications
 -Web Development
 -Social Media Coordination
 -Media Relations
 -Graphic Design
 -Video and Event Production
 Enrollment Services
 -Registrar
 -Placement Assessment
 -Enrollment Processing
 Admissions
 -Recruiting
 -Admissions Counseling
 -International Admissions
 -Study Abroad
- Information Technology**
 Academic Computing
 Technology Services
 -Instructional Technology Support
 Network/Telecommunications

Intro No. 1
Date 6/18/20
Reviewed by MS
Co. Attorney MS
Date 5/28/20

RESOLUTION
BROOME COUNTY LEGISLATURE
BINGHAMTON, NEW YORK

Permanent No. 2020-199
Date Adopted 6/18/2020
Effective Date 6/22/20

Sponsored by: All Members

Seconded by: Hon. Scott D. Baker

RESOLUTION ADOPTING THE BUDGET FOR SUNY BROOME FOR 2020-2021

WHEREAS, the Broome County Legislature is required to approve the College's annual unrestricted operating budget, and

WHEREAS, such approval must state the total unrestricted appropriations, sponsor contribution and fiscal year for which the operating budget is approved, and

WHEREAS, for fiscal year September 1, 2020 through August 31, 2021, SUNY Broome has requested approval of an unrestricted operating budget totaling \$52,720,459, which includes SUNY Broome's request for Sponsor Contribution funds totaling \$6,850,000, and

WHEREAS, the County Executive has recommended the same be approved by this County Legislature, and

WHEREAS, the Finance Committee of the County Legislature recommends approval of the total budget and sponsor contribution as presented, now, therefore, be it

RESOLVED, that the unrestricted operating budget for SUNY Broome for the college fiscal year September 1, 2020 through August 31, 2021, in the sum of \$52,720,459 be approved, and be it

FURTHER RESOLVED, that the Sponsor Contribution for SUNY Broome for the College fiscal year September 1, 2020 through August 31, 2021, in the sum of \$6,850,000 be approved, and be it

FURTHER RESOLVED, that SUNY Broome's operating budget be submitted to the State University Board of Trustee's for approval.

COUNTY OF BROOME) ss:
STATE OF NEW YORK)

I, the undersigned, Clerk of the Legislature of the County of Broome, DO HEREBY CERTIFY that the above is an original resolution of such Legislature duly adopted on the 18th day of June, 2020, by a majority of the members elected to the Legislature of said County at a regular meeting of said Legislature.

I FURTHER CERTIFY that at the time said resolution was adopted said Legislature was comprised of fifteen members.

IN WITNESS WHEREOF, I have hereunto set my hand and affixed the corporate seal of said Legislature this 19th day of June, 2020.

Date sent to County Executive: June 19, 2020

Approved [Signature]
County Executive

[Signature]
Deputy Clerk, County Legislature
County of Broome

Date 6/22, 2020

This Page

Intentionally Left Blank



State of New York
County of Broome Government Offices

Office of the Broome County Executive
Jason T. Garnar, County Executive

May 28, 2020

Honorable Members
Broome County Legislature
Governmental Plaza
Binghamton, New York 13902

Ladies and Gentlemen:

I respectfully submit the following recommended 2020-21 SUNY Broome budget for your review.

I am in full support of education and appreciate the efforts of SUNY Broome Community College. I would express this by recommending County support of \$6,850,000.

The Chairman and I have met several times with SUNY Broome administration to collectively construct a budget that is reflective of the strained budget situation we are facing to the COVID-19 pandemic's impact on Broome County finances.

As you are aware, we are looking at major financial implications due to the pandemic and there is the potential for significant revenue shortfalls. SUNY Broome administrators worked with my administration, Chairman Reynolds and our Office of Management and Budget to present a budget plan for 2020-21 that includes a reduction in County support.

The SUNY Broome budget for 2020-21 includes a reduction from the previous year's approved budget of \$557,385 of County sponsor share. There was also a reduction in the college 2021 Capital Improvement Project request of \$1,500,000.

I would like to thank the administration at SUNY Broome for their cooperation and communication during this difficult time as we all work together through this COVID-19 pandemic in Broome County.

This presented budget is necessary to maintain the quality of education, retain and facilitate student success and allow facility maintenance at the College.

Thank you.

Sincerely,

Jason T. Garnar
County Executive

This Page

Intentionally Left Blank

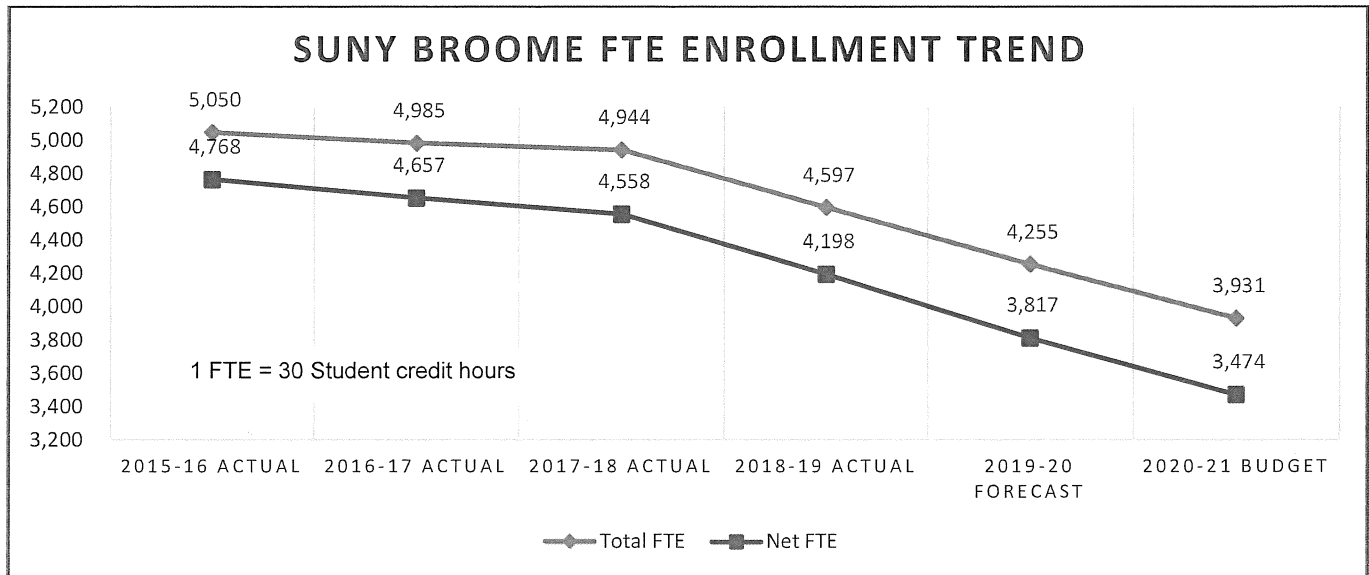
2020-21 Broome Community College Adopted Operating Budget

	2019-20 Adopted Budget	2020-21 changes proposed by College	2020-21 budget proposed by College	2020-21 additional changes recommended	2020-21 budget recommended	2020-21 Adopted Change	2020-21 Adopted Budget	% Change	% Budget
ASSUMPTIONS:									
Student enrollment FTE	4324	(393)	3,931	-	3,931	(393)	3,931	-9%	
EXPENSES:									
Personnel	\$ 32,550,200	\$ (1,811,172)	\$ 30,739,028	\$ -	\$ 30,739,028	\$ (1,811,172)	\$ 30,739,028	-5.6%	58.3%
Fringe benefits	\$ 14,426,646	\$ (102,255)	\$ 14,324,391	\$ -	\$ 14,324,391	\$ (102,255)	\$ 14,324,391	-0.7%	27.2%
Equipment	\$ -	\$ -	\$ -	\$ -	\$ -	\$ -	\$ -	#DIV/0!	0.0%
Contractual expenses	\$ 7,683,107	\$ (689,800)	\$ 6,993,307	\$ -	\$ 6,993,307	\$ (689,800)	\$ 6,993,307	-9.0%	13.3%
Repairs and Rovations	\$ 1,651,002	\$ (987,269)	\$ 663,733	\$ -	\$ 663,733	\$ (987,269)	\$ 663,733	-59.8%	1.3%
Total expenses	\$56,310,955	(\$3,590,496)	\$52,720,459	\$0	\$ 52,720,459	(\$3,590,496)	\$ 52,720,459	-6.4%	100.0%
REVENUES:									
Tuition	\$ 21,526,478	\$ (2,217,993)	\$ 19,308,485	\$ -	\$ 19,308,485	\$ (2,217,993)	\$ 19,308,485	-10.3%	36.6%
Out of state tuition	\$ 1,572,711	\$ (86,404)	\$ 1,486,307	\$ -	\$ 1,486,307	\$ (86,404)	\$ 1,486,307	-5.5%	2.8%
State aid	\$ 14,096,299	\$ (824,256)	\$ 13,272,043	\$ -	\$ 13,272,043	\$ (824,256)	\$ 13,272,043	-5.8%	25.2%
Broome County (sponsor)	\$ 7,407,385	\$ (557,385)	\$ 6,850,000	\$ -	\$ 6,850,000	\$ (557,385)	\$ 6,850,000	-7.5%	13.0%
Fees and Out of County	\$ 11,708,082	\$ 95,542	\$ 11,803,624	\$ -	\$ 11,803,624	\$ 95,542	\$ 11,803,624	0.8%	22.4%
Fund balance appropriation	\$ -	\$ -	\$ -	\$ -	\$ -	\$ -	\$ -	0.0%	0.0%
Total revenues	\$ 56,310,955	\$ (3,590,496)	\$ 52,720,459	\$ -	\$ 52,720,459	\$ (3,590,496)	\$ 52,720,459	-6.4%	100.0%

This Page

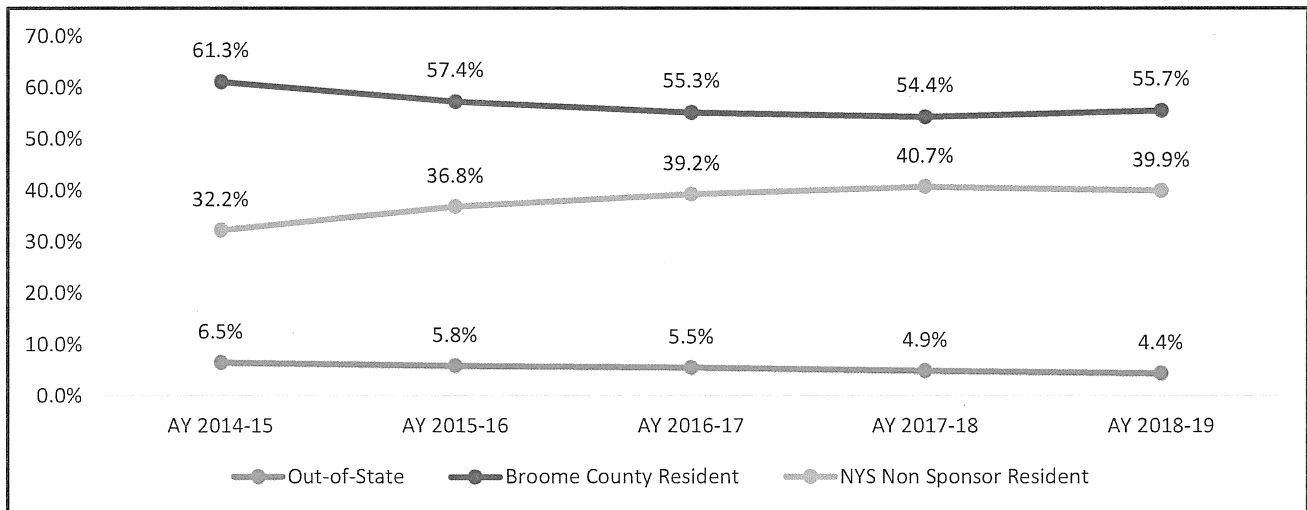
Intentionally Left Blank

SUNY Broome FTE Enrollment Trends



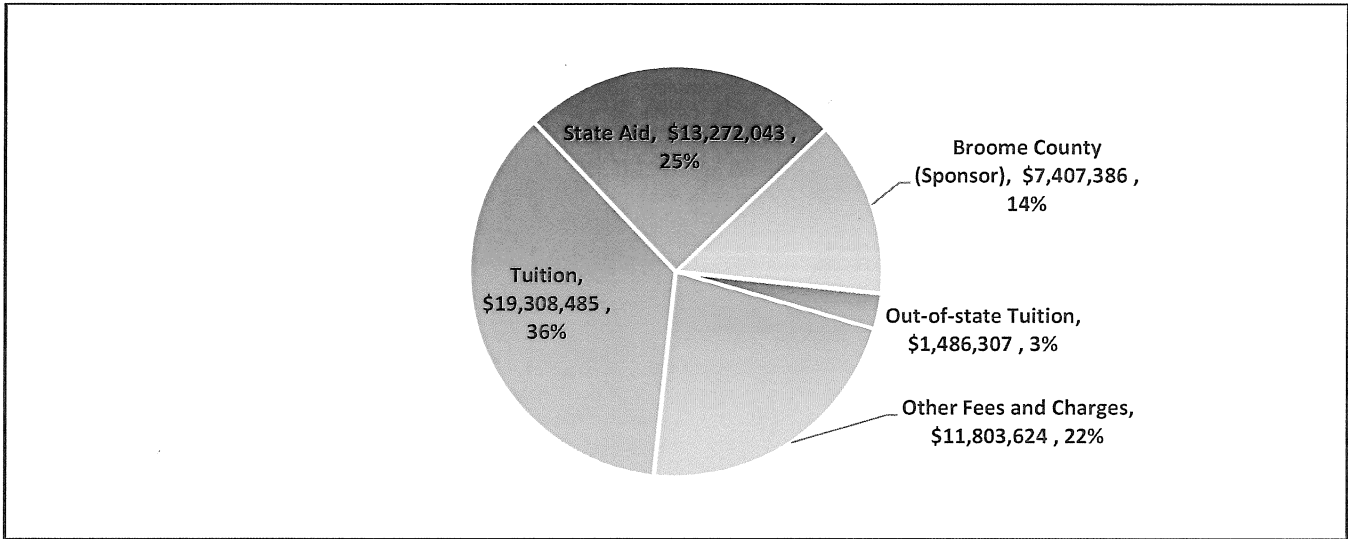
- 2020-21 FTE enrollment has been budgeted to decline by 7.6% to 3,931 FTEs compared to the 2019-20 enrollment forecast of 4,255 FTEs
- Proposed 2020-21 net FTE enrollment of 3,474 FTEs, which reflects campus instruction exclusive of the high school Fast Forward program and the contracted services for International students, represents a 9.0% decline from the 2019-20 enrollment forecast of 3,817 net FTEs

Enrollment by Residency



- Broome County Resident enrollment has decreased by 5.6 percentage points over the past five years
- Other New York State County Resident enrollment has increased by 7.7 percentage points since Academic Year 2014-15

Revenue Highlights



- Student Tuition represents 36% of the total 2020-21 operating revenue
- State Aid represents 25% of total 2020-21 operating revenue

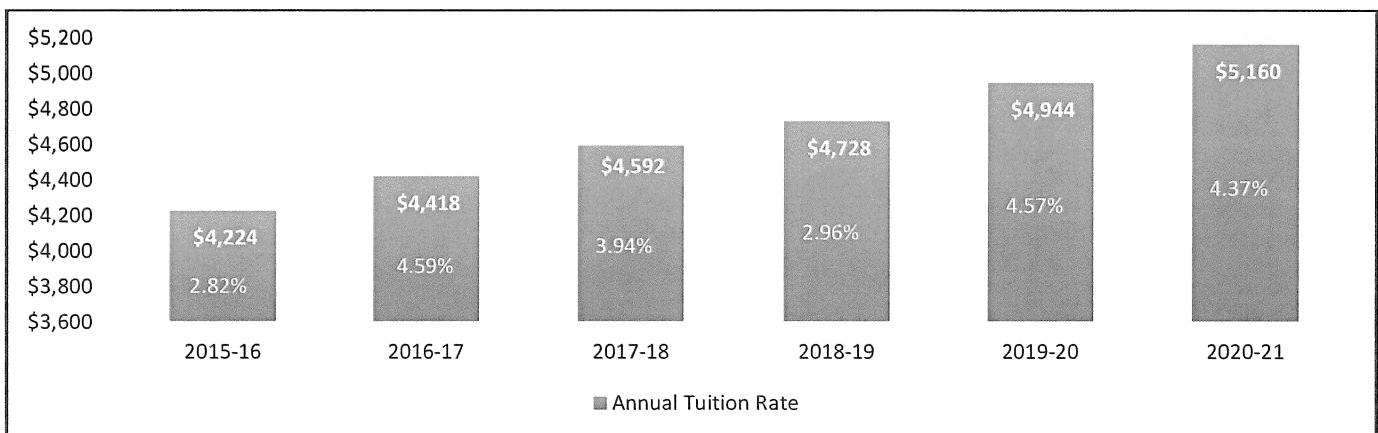
Tuition to Increase by 4.37%; \$108 per Semester; \$216 Annual

In a period of enrollment decline, a tuition increase will be essential for SUNY Broome to maintain its high level of excellence. SUNY Broome’s proposed tuition is \$5,160 for the 2020-21 academic year.

Under New York State regulations, tuition may fund more than one-third of the budget only if the sponsor (Broome County Government) *maintains effort* – meaning that it contributes at least as much in total to the operating budget when enrollments are level or increasing, and per resident FTE when they are not.

Tuition and fees are set by the SUNY Broome Board of Trustees and approved by the SUNY Board of Trustees.

Annual Tuition Trends

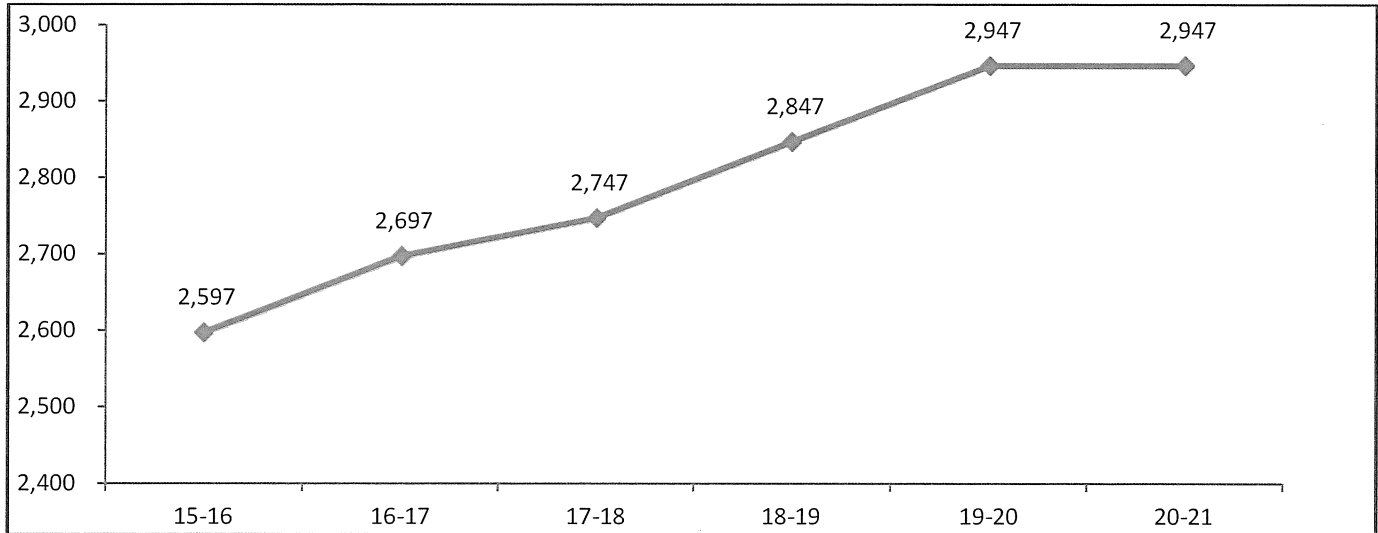


- Tuition is proposed to increase by 4.37%. Tuition increases have averaged 3.8% since 2015-16

State Aid Estimated to Remain Flat per Student FTE

State aid is estimated to remain flat for 2020-21 at the 2019-20 rate of \$2,947 per full-time equivalent (FTE). Given that the state aid funding formula of using the weighted average of the last three academic years has not changed, SUNY Broome's state aid funding will decrease by approximately \$825,000 in 2020-21. The decrease in funding for state aid is directly related to the current declining student enrollment environment.

State Aid per Student FTE*



* 1 FTE = 30 student credit hours

Broome County Sponsor Share

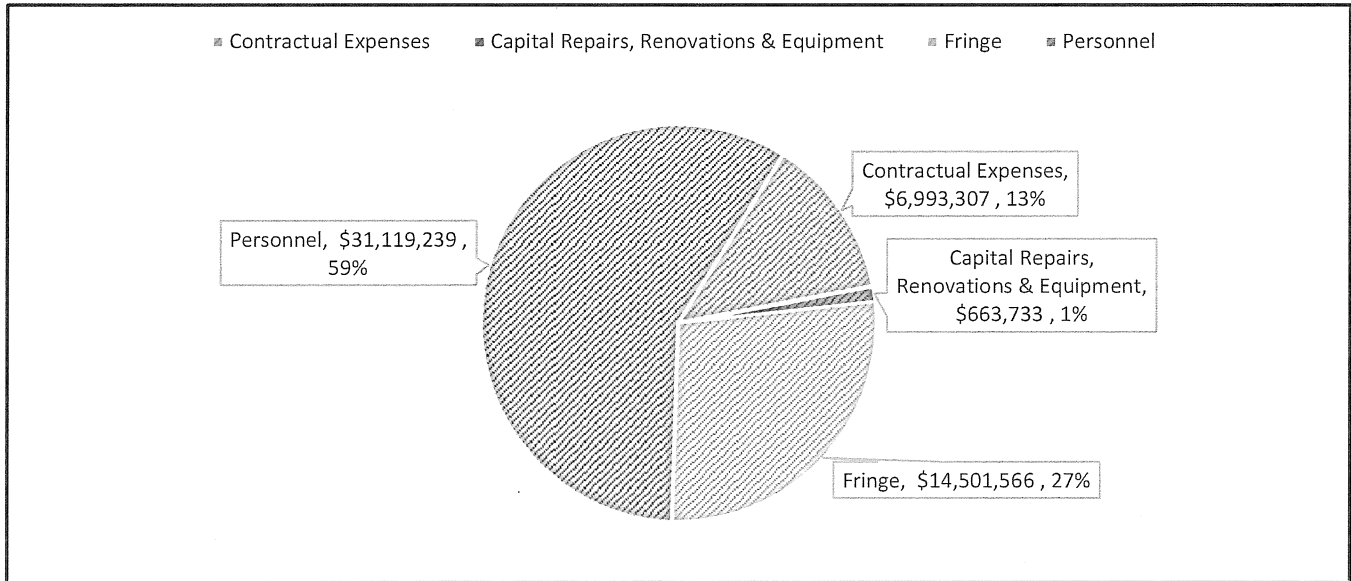
The 2020-21 proposed operating budget maintains effort by Broome County at the current year's funding level, which is \$7,407,386 for the Sponsor Share.

Fiscal Year	Broome County Operating Budget Support				Broome County Capital Support			Total
	Amount	Increase	% Change	% Budget Funded by Broome	Debt Service Payments	Less: Capital Chargeback	Net Broome County Capital	Amount
2015-16 Actual	7,118,352	139,576	2%	13.2%	1,570,765	(519,437)	1,051,328	8,289,117
2016-17 Actual	7,189,536	71,184	1%	13.3%	1,542,064	(535,630)	1,006,434	8,195,970
2017-18 Actual	7,261,431	71,895	1%	13.1%	2,289,235	(556,657)	1,732,578	8,994,009
2018-19 Actual	7,334,046	72,615	1%	13.1%	2,134,266	(495,243)	1,639,023	8,973,069
2019-20 Estimate	7,407,386	73,340	1%	13.5%	2,134,266	(495,243)	1,639,023	9,046,409
2020-21 Proposed	7,407,386	-	0%	13.9%	2,134,266	(495,243)	1,639,023	9,046,409

Miscellaneous Revenues & Fees

Student fees are proposed to increase in four (4) areas: (1) technology fee, which is necessary for additional technology investments including classroom equipment, computer hardware, computer software, and other recurring technology costs; (2) lab fee, which is necessary to support materials and additional instruction for applied learning classroom environments; (3) transportation fee for increased public transportation costs, and additional capital investments for equipment and repairs to the College's roads, sidewalks and parking lot infrastructure; and (4) the College service fee for staffing in priority student service areas.

Expense Highlights



- SUNY Broome Community College 2020-21 Budget reflects a 2.9% decrease in total expenses compared to the 2019-20 budget forecast. The budget includes funding for salary and wage increases for the three labor agreements.
- Capital Repairs, Renovations and Equipment is budgeted for \$663,733, which is relatively flat compared to the 2019-20 forecasted spending level.
- Contractual expenses, inclusive of utilities, professional services, supplies and other institutional expenses, are budgeted above the 2019-20 forecasted spending level, primarily due to the opening of Carnegie Culinary and Event Center, expansion of public transportation routes for students and one-time cost savings that are not sustainable annually.
- Personnel and fringe benefits are approximately 86% of the 2020-21 operating budget.

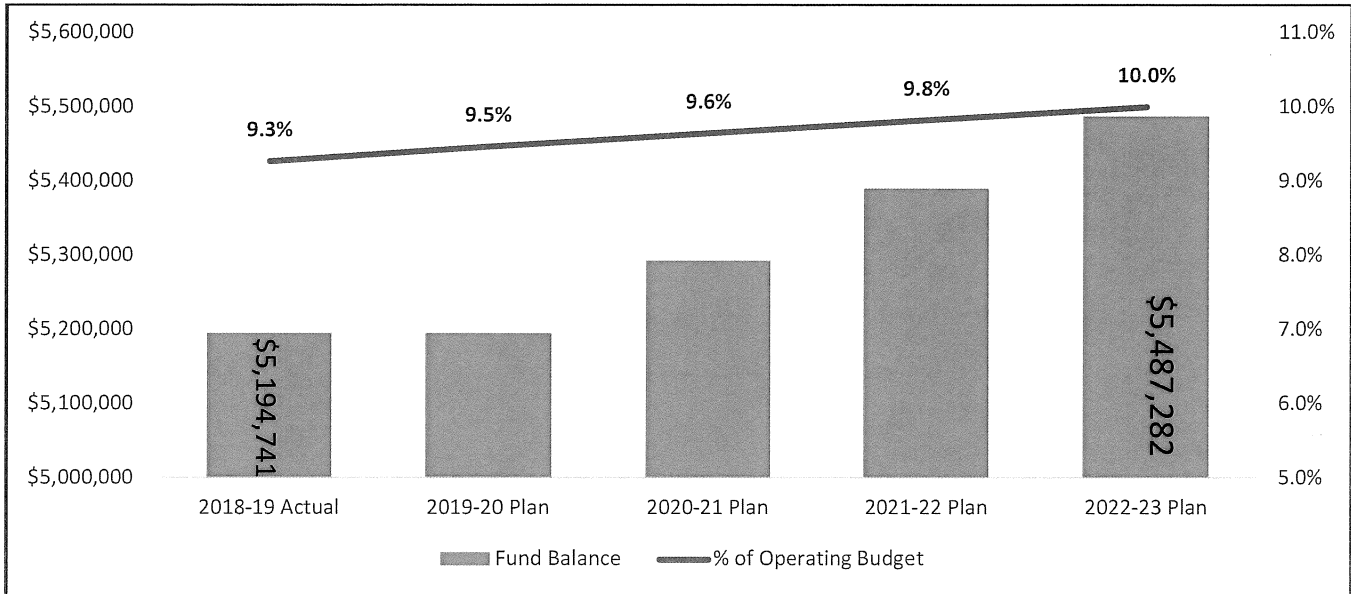
SUNY Broome Spending Comparison

SUNY Broome spending continues to be student-focused, with approximately 48 percent of the annual operating costs invested directly into instruction. Instructional costs include personnel (labor), fringe benefits, contractual expenses, and equipment costs. As a percentage of operating costs, SUNY Broome invests more in the instructional areas than 75 percent of all other SUNY community colleges. For non-instructional costs, the College ranks 25th in spending, or 5th lowest out of 30 community colleges, which is very efficient.

Spending Level	Instruction
High	54%
SUNY Broome	48%
Rank/30	5th Highest
Average	43%
Low	29%

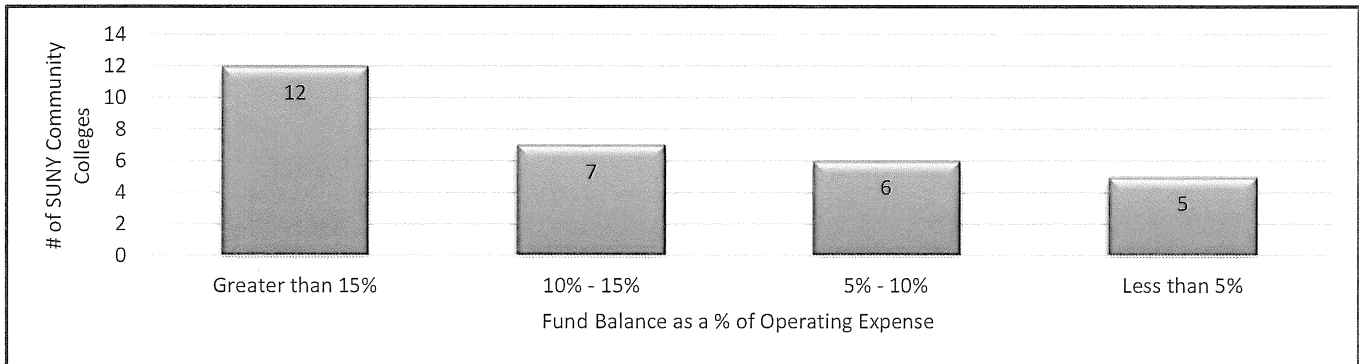
Spending Level	Non-Instruction
High	21%
Average	10%
SUNY Broome	7%
Rank/30	5th Lowest
Low	5%

SUNY Broome Fund Balance Plan



- New York State Education Code 602.1d requires the fund balance to be "maintained at a level consistent with sound cash management procedures." A fiscally sound fund balance is recommended by SUNY and GASB to fall within a range of 5% to 15%. SUNY Broome's 2018-19 audited financial statements reflects a fund balance at approximately 9.3%, which is nearing the mid-range of the SUNY/GASB benchmark.
- To establish a fund balance at the mid-range level of at least 10% of the SUNY/GASB benchmark, it would require an approximate \$100,000 increase of net position each year for the next three years.

SUNY Broome Fund Balance Comparison



- At the end of the 2017-18 fiscal year, almost two-thirds of SUNY community colleges had fund balance reserves that were higher than or equal to 10 percent of their operating expenses.
- SUNY Broome with a 9.3 percent fund balance is ranked 22nd lowest out of 30 SUNY community colleges in fund balance as a percentage of operating expenses.

This Page

Intentionally Left Blank

SUNY Broome Community College Full-Time Regular Positions

Full-time regular positions are approved by the College Board of Trustees

Title	Unit	Grade*	2017-18	2018-19	2019-20	2020-21
Counselor	Faculty	8	2	1	1	1
Professor	Faculty	8	52	51	65	65
Applied Learning & Career Specialist	Faculty	7A	1	1	1	1
Programmer Analyst II	Faculty	7A	5	5	5	5
Senior Instructional Designer	Faculty	7	1	1	1	1
Systems Analyst	Faculty	7A	2	2	2	2
Associate Counselor - 12	Faculty	6A	1	1	1	1
Associate Librarian -12	Faculty	6A	1	1	1	1
Senior Accessibility Specialist	Faculty	6A		1	1	1
Senior Learning Specialist - 12	Faculty	6A	1	1	1	1
Senior Network/Telecomm Specialist	Faculty	6A			1	1
Associate Professor	Faculty	6	50	47	47	47
Senior Learning Specialist	Faculty	6	2	2	2	2
Clinical Radiologic Tech Instructional Specialist	Faculty	5A	2	2	3	3
Instructional Designer	Faculty	5A	2	3	3	3
Network Telecommunications Specialist	Faculty	5A	1	2	1	1
Staff Associate -12	Faculty	5A	9	9	9	9
Staff Associate for Video & Photography	Faculty	5A	1	1	1	1
Accessibility Specialist	Faculty	5		1	1	1
Learning Specialist - 10	Faculty	5	1	1	1	1
Assistant Counselor -12	Faculty	4A	1	2	2	2
Assistant Librarian -12	Faculty	4A	2	2	3	3
Assistant Librarian - 10	Faculty	4	1	1	1	1
Clinical Nursing Skills Center Instructional Spec I	Faculty	4	1	1	1	1
Assistant Professor	Faculty	4	49	49	35	35
Academic Advisor	Faculty	3A	7	7	7	7
Instructor	Faculty	3	3	3	3	3
Technical Assistant IIA -12	Faculty	2A	12	13	14	14
Technical Assistant II	Faculty	2	3	3	2	2
Technical Assistant IA - 12	Faculty	1A	1	1	1	1
Director of Enrollment Service	Guild	12	1	1	1	1
Director of Facilities Management	Guild	12		1	1	1
Director of Information Technology	Guild	12	1	1	1	1
Director Continuing Ed & Worforce Development	Guild	11	1	1	1	1
Director of Financial Aid	Guild	11	1	1	1	1
Director of Health & Safety	Guild	11	1	1	1	1
Director of LRC and LAD	Guild	10	1	1	1	1
Director of Admissions	Guild	10	1	1	1	1

SUNY Broome Community College Full-Time Regular Positions

Full-time regular positions are approved by the College Board of Trustees

Title	Unit	Grade*	2017-18	2018-19	2019-20	2020-21
Director of Athletics	Guild	9	1	1	1	1
Director of Ice Center	Guild	9	1	1	1	1
Director of Student Activities	Guild	9	1	1	1	1
Director of Marketing & Communications & Public Info	Guild	9		1	1	1
Assistant Controller	Guild	8	1	2	2	2
Assistant Dir Administrative Information Systems	Guild	8	1	1	1	1
Assistant Director of Security & Health	Guild	8	1	1	1	1
Assistant Director Technology Services	Guild	8	1	1	1	1
Director of International Education	Guild	8	1	1	1	1
Director of Sponsored Programs	Guild	8	1	1	1	1
Director of Educational Opportunity Program	Guild	7	1	1	1	1
Assistant Registrar	Guild	7	1	1	1	1
Asst. to Dir. of Facilities Mgmt. for Capital Project Dev., Space Utilization & Energy Mgmt.	Guild	7		1	1	1
Bursar	Guild	7	1	1	1	1
Assistant Director of Network/Telecommunications	Guild	6	1	1	1	1
Asst to Director of Campus Oper for Custodial Services	Guild	6	1	1	1	1
Asst to Director of Campus Oper for Physical Plant	Guild	6	1	1	1	1
Asst to Director of Campus Oper for Technical Services	Guild	6	1	1	1	1
Assistant Director of Financial Aid - Operations	Guild	6	1	1	1	1
Assistant Director of Financial Aid - Veteran's Affairs	Guild	6	1	1	1	1
Environmental Health & Safety Coordinator	Guild	6	1	1	1	1
Resource/Compliance Officer	Guild	6	1	1	1	1
Special Events Coordinator	Guild	6		1	1	1
Student Rights & Responsibilites Coordinator	Guild	6		1	1	1
Assistant Director Ice Center	Guild	5	1	1	1	1
Assistant Bursar	Guild	5	1	1	1	1
Assistant Director of Athletics	Guild	5	1	1	1	1
Asst Dir of Admissions/International Student Services	Guild	4	1	1	1	1
Sr. Staff Assistant - Research Analyst	Guild	3	1	1	1	1
Sr. Staff Assistant	Guild	3	3	5	5	5
Staff Assistant	Guild	2	8	7	8	8
President	Mgmt Conf	15	1	1	1	1
VPAA	Mgmt Conf	14		1	1	1
VP for Administrative and Financial Affairs	Mgmt Conf	14	1	1	1	1
VP Student Development & Chief Diversity Officer	Mgmt Conf	14	1	1	1	1
Associate VP & Controller	Mgmt Conf	12	1	1	1	1
Associate VP and Dean	Mgmt Conf	12	4	4	4	4
Associate VP Student Development & Dean of Students	Mgmt Conf	12	1	1	1	1

SUNY Broome Community College Full-Time Regular Positions

Full-time regular positions are approved by the College Board of Trustees

Title	Unit	Grade*	2017-18	2018-19	2019-20	2020-21
Dean of Institutional Effectiveness & Enrollment Planning	Mgmt Conf	11	1	1	1	1
Executive Enrollment Mgmt. Officer	Mgmt Conf	10	1	1	1	1
Human Resources Officer	Mgmt Conf	7	1	1	1	1
Human Resources Specialist	Mgmt Conf	6	1	1	1	1
Sr. Associate to the EVP & CAO	Mgmt Conf	6	1	1	1	1
Payroll Administrative Officer	Mgmt Conf	6		1	1	1
Budget & Institutional Effectiveness Specialist	Mgmt Conf	5	1	1	1	1
Personnel Specialist	Mgmt Conf	5	1	1	1	1
Assistant to the President	Mgmt Conf	4		1	1	1
Benefits Assistant	Conf Clerical	16	1	1	1	1
Secretary	Conf Clerical	15	4	2	2	2
Secretary	Conf Clerical	14	1	1	1	1
Personnel Assistant	Conf Clerical	11	1	1	1	1
Sr. Clerk	Conf Clerical	9		1	1	1
Electrician	ESPA	23	1	1	1	1
Plumber	ESPA	23	1	1	1	1
Purchasing Agent	ESPA	20	1	1	1	1
Campus Peace Officer	ESPA	19A	7	10	10	10
Senior Accountant	ESPA	18	2	1	1	1
Payroll Supervisor	ESPA	17	1	1	1	1
Accountant - (County)	ESPA	16	2	2	2	2
Office Manager	ESPA	16	4	5	5	5
Carpenter	ESPA	16		1	1	1
HVAC Systems Technician III	ESPA	14		1	1	1
Campus Safety Officer	ESPA	13	2	2	2	2
Principal Account Clerk	ESPA	13	1	1	1	1
Secretary	ESPA	13	14	14	15	15
Senior Duplicating Center Worker	ESPA	13	1	1	1	1
Stenographic Secretary	ESPA	13	4	4	4	4
Student Accounts Specialist	ESPA	13	4	4	4	4
Custodial Supervisor	ESPA	11	1	1	1	1
Senior Recorder	ESPA	11	2	2	2	2
Maintenance Mechanic	ESPA	10	5	5	5	5
Painter	ESPA	10	1	1	1	1
Courier	ESPA	9	2	2	2	2
Recorder	ESPA	9	2	2	2	2
Senior Account Clerk	ESPA	9	9	9	10	10
Student Records Specialist	ESPA	9	9	8	8	8

SUNY Broome Community College Full-Time Regular Positions

Full-time regular positions are approved by the College Board of Trustees

Title	Unit	Grade*	2017-18	2018-19	2019-20	2020-21
Keyboard Specialist	ESPA	8	3	2	2	2
Senior Clerk	ESPA	8	2	3	3	3
Senior Clerk - 10 mth	ESPA	8		1	1	1
Duplicating Center Worker	ESPA	7	2	2	2	2
Maintenance Worker	ESPA	7	5	5	5	5
Custodial Worker	ESPA	6	26	26	32	32
Library Clerk	ESPA	6	3	3	3	3
Total full-time positions			403	413	423	423

*"A" Denotes 12-Month Position in Faculty