

# PREPAREDNESS SUMMIT

HHS emPOWER Initiative Demo:  
Using Medicare De-Identified and Individual Data, Maps, and Tools for Access  
and Functional Needs Emergency Preparedness, Response, Recovery, and  
Resilience Activities



Data  
Awareness  
Preparedness  
Resilience



DALLAS HILTON ANATOLE

APRIL 19-22, 2016

PREPAREDNESSUMMIT.ORG

@PREPSUMMIT #PREP16

## Contact Information

### **Kristen P. Finne, B.A.**

Lead, HHS emPOWER Initiative

Senior Policy Analyst, Division of Health Systems Policy

Office of the Assistant Secretary for Preparedness and Response

U.S. Department of Health and Human Services

### **Sean J. Britton, NRP, CPH, CEM**

Deputy Director of Public Health

Deputy Emergency Medical Services Coordinator

Broome County Health Department

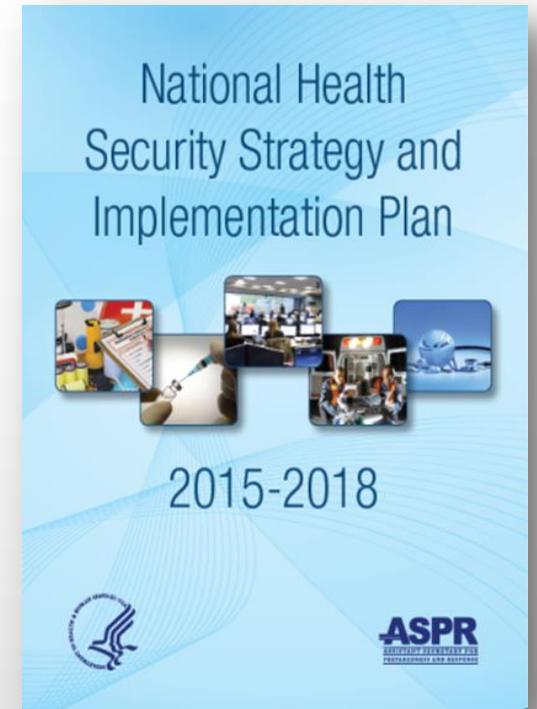


# National Health Security Strategy and Implementation Plan 2015-2018

**1**  
Build and sustain healthy,  
resilient communities.

**2**  
Ensure comprehensive  
health situational awareness  
to support decision-making  
before incidents and during  
response and recovery  
operations.

**4**  
Enhance the integration and  
effectiveness of the public  
health, healthcare, and  
emergency management  
systems.

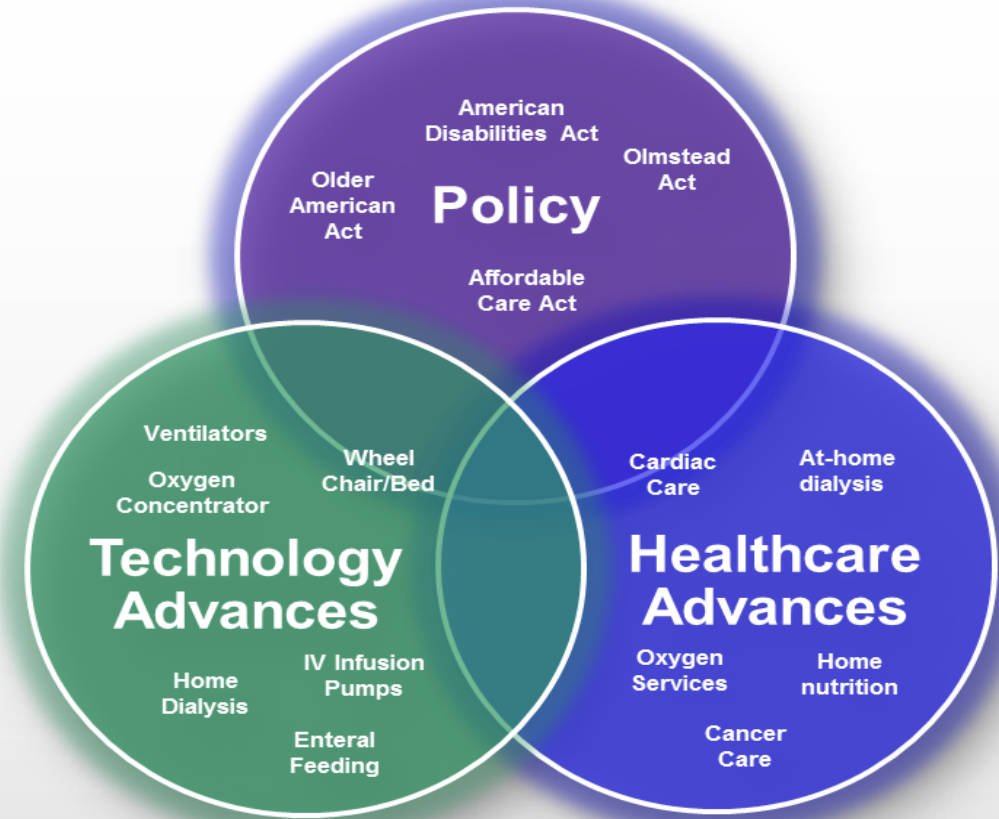


URL: <http://www.phe.gov/Preparedness/planning/authority/nhss/Pages/default.aspx>

## Do you know who lives in your community and what their access and functional needs are?

Can we help a community better understand how many at-risk individuals with access and functional needs rely upon electricity-dependent medical and assistive equipment, healthcare services, and their local healthcare system- daily, weekly, monthly?

Can we better understand, assess, and mitigate disaster-induced healthcare system stress and its impact on access, utilization, and health outcomes for at-risk populations with access and functional needs?



# How can federal health data inform and support preparedness, response, and recovery?

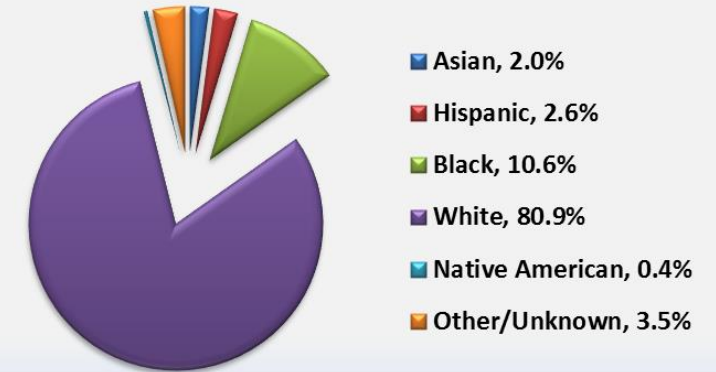
- **Medicare insures 50 million Americans**

- 50 states, 5 territories, & DC
- 65+ years, blind, disabled adults & children
- ~93% of dialysis-dependent end-stage renal disease population
- ~20% of State Medicaid (mostly disabled)

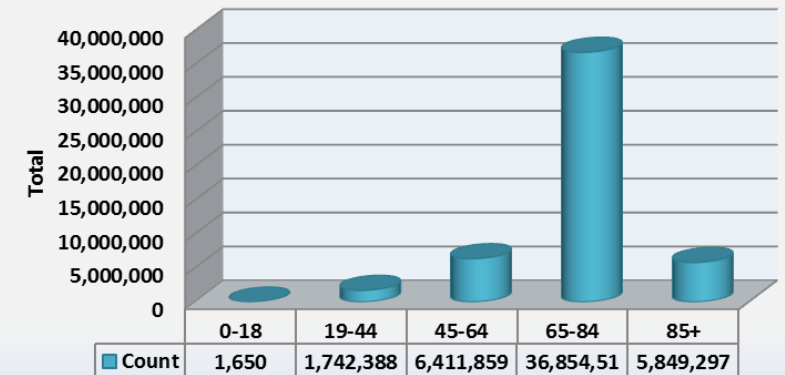
- **Medicare beneficiaries may reside in:**

- personal homes
- residential or long-term care facilities
- assisted living communities
- board and care homes
- subsidized housing communities

Medicare Population % by Race



Medicare Population by Age



# White House Strong Cities, Strong Communities Initiative

## “ A First-in-the-Nation At-Risk Medicare Data Pilot Exercise”

City of New Orleans, June 10-11, 2013

PREPAREDNESS  
SUMMIT

Planning  
Today for  
Rebuilding  
Tomorrow:  
RESILIENCY &  
RECOVERY  
IN THE 21ST  
CENTURY

PREPAREDNESSUMMIT.ORG

@PREPSUMMIT #PREP16

- **611 Had a Ventilator or Oxygen Concentrator**
  - 191 homes visited, 75% response rate
  - 93% had Medicare-identified durable medical equipment (DME)
- **Individual Preparedness Findings:**
  - 15 of 611 were enrolled in NOLA’s registry
  - 8 of 611 were enrolled in electric company’s registry
  - 41% did not have an emergency plan
  - 55% would need assistance in an emergency
- **NOLA Emergency Response Outreach Uses:**
  - 2013 Boil Water Emergency- enteral DME
  - 2014 Ice Storm- early dialysis



Dr. Nicole Lurie, U.S. Department of Health and Human Services Assistant Secretary for Preparedness and Response, with Dr. Karen DeSalvo, Health Commissioner for the City of New Orleans Health Department in June 2013

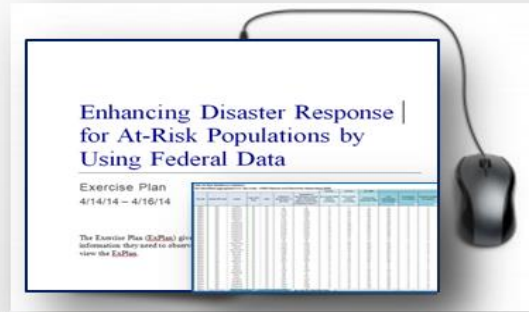


# HHS emPOWER Initiative “HHS’ Data and Mapping Quality Improvement Partnership”

“Right Data, Right Person, Right Tool, Right Time”



**DATA**



**TOOLS**



**MAPS**

Planning  
Today for  
Rebuilding  
Tomorrow:  
RESILIENCY &  
RECOVERY  
IN THE 21ST  
CENTURY

# National HHS emPOWER Dataset

Data as of 1/27/2016



Planning Today for Rebuilding Tomorrow:  
RESILIENCY & RECOVERY IN THE 21ST CENTURY

PREPAREDNESSUMMIT.ORG

@PREPSUMMIT #PREP16

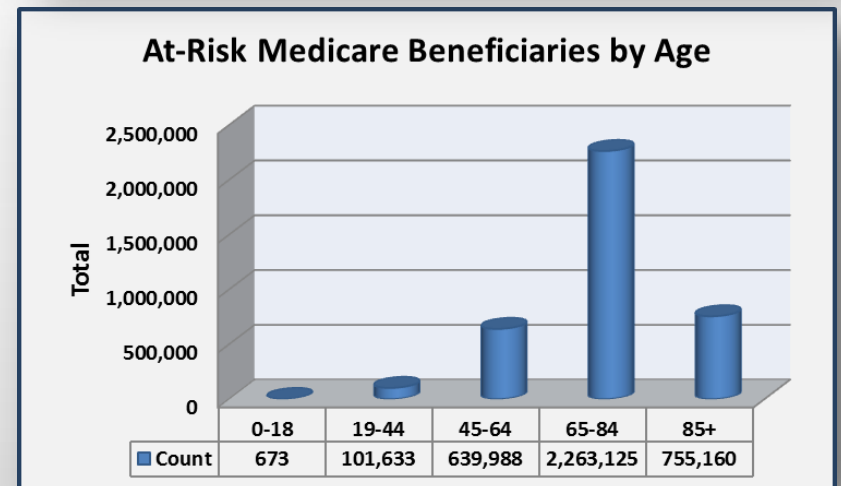
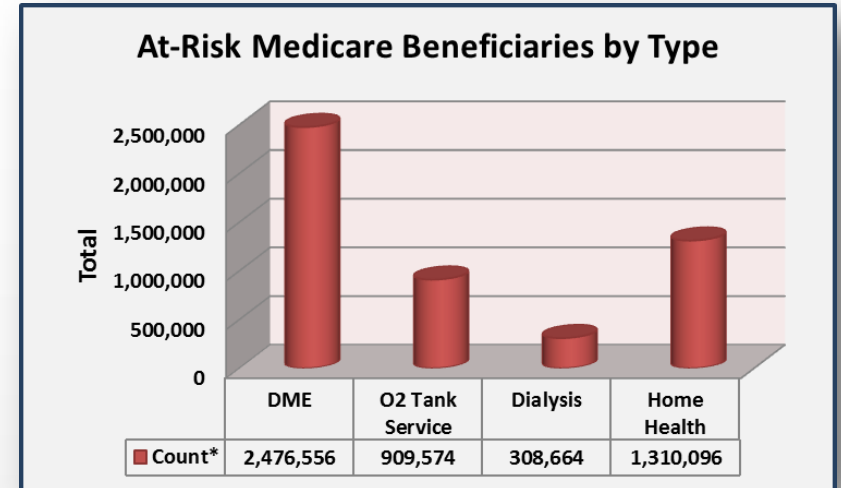
- **3.8M at-risk Medicare beneficiaries living at home independently**

- **Medicare at-risk data types include:**

- Electricity-Dependent Durable Medical Equipment (DME)
  - Ventilators
  - Oxygen concentrators
  - Enteral feeding machines
  - Intravenous (IV) pumps
  - Suction pumps
  - At-home dialysis machines
  - Electric Wheelchairs/scooters
  - Electric Beds
- Oxygen (O<sup>2</sup>) Tank Services
- Dialysis Services (facility/home)
- Home Health Services

- **Medicare at-risk data types include:**

- De-identified-restricted & public
- Individual-restricted to public health authorities



Data as of 1/27/2016



# HHS emPOWER Map

## Community Public Map-- People Helping People at the Zip Code Level



Planning Today for Rebuilding Tomorrow: RESILIENCY & RECOVERY IN THE 21ST CENTURY

PREPAREDNESSUMMIT.ORG

@PREPSUMMIT #PREP16

U.S. Department of Health & Human Services  
Office of the Assistant Secretary for Preparedness and Response

Preparedness Emergency About ASPR

**Public Health Emergency**  
Public Health and Medical Emergency Support for a Nation Prepared

### HHS emPOWER Map

Over 2.4 million Medicare beneficiaries rely upon electricity-dependent medical and assistive equipment, such as ventilators and wheel chairs, in our communities. Severe weather and disasters that cause power outages can be life threatening for these individuals.

How can we empower community and electricity-dependent Medicare beneficiary health resilience?

Every hospital, first responder, electric company, and community member can use the map to find the monthly total of Medicare beneficiaries with electricity-dependent equipment claims at the U.S. state, territory, county, and zip code level and turn on "real-time" NOAA severe weather tracking services to identify areas and populations that may be impacted and at risk for power outages.

Together, we can all better anticipate potential access and functional needs, emergency plan for the whole community, and assist our at-risk community members before, during, and after an emergency.

Medicare Data Totals (for geographical area)		Electricity-Dependent	National Flood Outlook
Geographic Area:	Fort Bend	0	Likely
Beneficiaries:	35,812	1 - 1,577	Occurring or Imminent
Electricity-Dependent Beneficiaries:	1,226	1,578 - 3,524	Possible

**"Medicare Data Meets NOAA Weather Data In Your Community"**

**State**

**County**

**Zip Code**

Medicare Data Totals (for geographical area)		Electricity-Dependent	National Flood Outlook
Geographic Area:	Fort Bend	0	Likely
Beneficiaries:	35,812	1 - 1,577	Occurring or Imminent
Electricity-Dependent Beneficiaries:	1,226	1,578 - 3,524	Possible

# What data can I find? How can I use the HHS emPOWER Map?

- **De-identified Data:**
  - Monthly # Medicare beneficiaries
  - Monthly # of electricity-dependent Medicare beneficiaries- *Recent claim for 8 types of electricity-dependent durable medical equipment (DME)*
- **NOAA Severe Weather Tracking**
  - Hurricane\*
  - Radar
  - Precipitation\*
  - Storm Prediction\*
  - Flood Outlook\*
  - None- *default*
- **Background Maps (ESRI)**
  - Base map\*
  - Topographic\*
  - Streets\*
  - Satellite\*
  - Hybrid
  - Grey
  - Dark Grey
  - Oceans
  - National Geographic
  - Terrain\*
  - Open Street Map

Select an Area by Hovering Your Mouse Over a State, County, and then Zip Code to find data in the Medicare Data Total Section or in the Dynamic Table Below

Medicare Data Totals (for geographical area)

Geographic Area: U.S.  
Beneficiaries: 51,042,822  
Electricity-Dependent Beneficiaries: 2,465,677

Electricity-Dependent

- 25 - 18,564
- 18,565 - 43,349
- 43,350 - 73,285

NOAA Weather Legend

Select a region for data, select a basemap, select a weather service (option or none) and hit reset when you want to see another region.

State/Territory | County | ZIP Code | Basemap | None | Reset

Electricity-Dependent

State	Medicare Beneficiaries	Electricity-Dependent
Alaska	75,123	2,538
Alabama	908,233	49,901

Or Use the Drop Down to Select a State, County, and then Zip Code for Data

Select Base Map

Select Weather

Reset

Select a region for data, select a basemap, select a weather service (option or none) and hit reset when you want to see another region.

State/Territory | County | ZIP Code | Basemap | Storm Prediction | Reset

Electricity-Dependent

State	Medicare Beneficiaries	Electricity-Dependent
Alaska	75,123	2,538

Planning Today for Rebuilding Tomorrow:  
RESILIENCY & RECOVERY IN THE 21ST CENTURY

# Can I consume and display the HHS emPOWER Map rest service in our GIS system?

**YES! First locate your GIS expert, then them the great news, and ask them to:**

Go to: [Geohealth.hhs.gov](http://Geohealth.hhs.gov)

OR

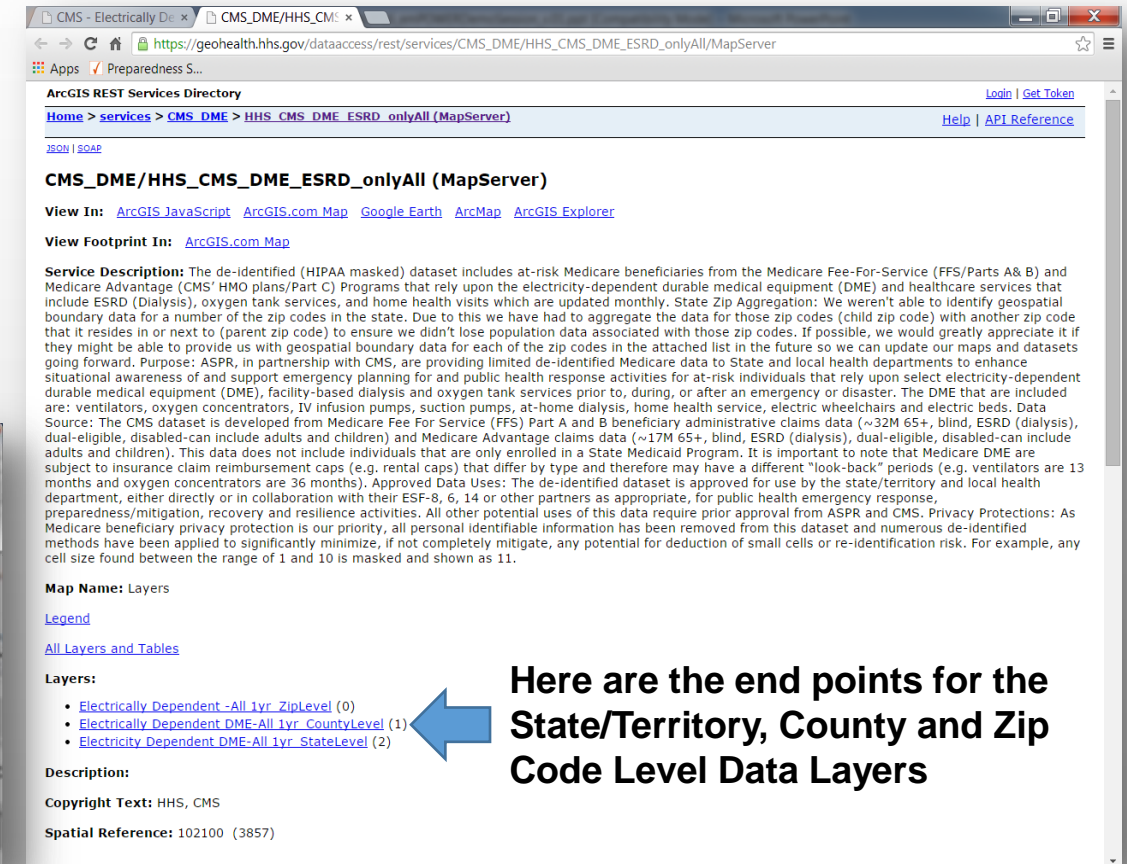
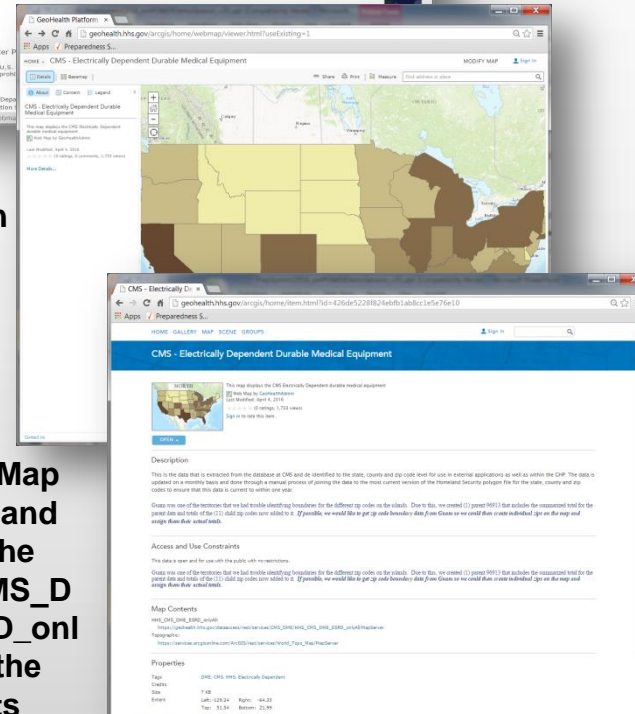
Go directly to the URL:

[https://geohealth.hhs.gov/dataaccess/rest/services/CMS\\_DME/HHS\\_CMS\\_DME\\_ESRD\\_onlyAll/MapServer](https://geohealth.hhs.gov/dataaccess/rest/services/CMS_DME/HHS_CMS_DME_ESRD_onlyAll/MapServer)



Click on More Details

Scroll to Map contents and click on the "HHS\_CMS\_DME\_ESRD\_onlyAll" for the end points



Here are the end points for the State/Territory, County and Zip Code Level Data Layers

- Electrically Dependent - All 1yr ZipLevel (0)
- Electrically Dependent DME-All 1yr CountyLevel (1)
- Electricity Dependent DME-All 1yr StateLevel (2)



Planning Today for Rebuilding Tomorrow: RESILIENCY & RECOVERY IN THE 21ST CENTURY

PREPAREDNESSSUMMIT.ORG

@PREPSUMMIT #PREP16

# HHS emPOWER Initiative

## State Health Department De-identified Emergency Planning Datasets



- Provides more granular de-identified data:
  - Medicare totals by type of DME and healthcare services
- Sample Use Cases:
  - Informing power restoration prioritization decision making at all levels
  - Identifying optimal locations, support, and power needs for multiple devices in general population shelters
  - Assessing potential transportation needs for evacuating or transport to healthcare providers (e.g. dialysis)
  - Anticipating potential EMAC requests for at-risk populations residing by borders
  - Sets the stage for life-saving assistance

HHS emPOWER Initiative State/Territory CMS Emergency Planning Dataset												
Zip Code	County FIPS Code	County	State FIPS Code	State	# Medicare Beneficiaries in Zip Code	Population of Beneficiaries at home with a Residential Address, not P.O. Box or Unknown in Zip Co	# In-Facility ESRD Dialysis (3 months)	# O2 services (13 months)	# Electricity-Dependent DME	# O2 concentrators (36 months)	# Ventilators (13 months)	# Enteral Feeding (13 months)
00027	041	El Paso	08	CO	0	0	0	0	0	0	0	0
80002	059	Jefferson	08	CO	896	887	11	47	116	106	11	11
80003	059	Jefferson	08	CO	1,719	1,681	13	105	247	242	11	11
80004	059	Jefferson	08	CO	2,471	2,329	19	157	387	370	11	11
80005	059	Jefferson	08	CO	1,567	1,482	11	69	186	182	11	11
80007	059	Jefferson	08	CO	452	443	0	22	48	46	0	11
80010	001	Adams	08	CO	1,722	1,595	84	94	165	150	11	11
80011	005	Arapahoe	08	CO	2,734	2,510	34	202	377	349	11	14
80012	005	Arapahoe	08	CO	2,701	2,524	32	188	285	264	11	11
80013	005	Arapahoe	08	CO	3,071	3,028	20	143	330	311	11	11
80014	005	Arapahoe	08	CO	3,758	3,671	25	200	442	418	11	11
80015	005	Arapahoe	08	CO	2,614	2,495	18	110	275	258	11	11
80016	005	Arapahoe	08	CO	2,670	2,634	11	90	277	269	11	11
80017	005	Arapahoe	08	CO	1,371	1,350	19	66	154	140	11	11
80018	005	Arapahoe	08	CO	363	356	11	17	45	44	0	11
80019	001	Adams	08	CO	63	62	11	11	11	11	0	0
80020	014	Broomfield	08	CO	2,152	2,032	15	100	250	233	0	11
80021	059	Jefferson	08	CO	1,215	1,166	11	56	159	146	11	11
80022	001	Adams	08	CO	1,852	1,723	30	115	238	220	11	11
80023	014	Broomfield	08	CO	1,319	1,306	11	26	134	107	0	11
80026	013	Boulder	08	CO	1,882	1,798	11	73	219	202	11	11
80027	013	Boulder	08	CO	1,544	1,446	11	50	175	171	0	0
80030	001	Adams	08	CO	824	681	14	43	105	101	0	0
80031	001	Adams	08	CO	1,877	1,855	11	90	224	215	11	11
80033	059	Jefferson	08	CO	2,074	1,914	17	119	280	280	11	11
80101	039	Elbert	08	CO	58	48	0	11	11	11	0	0
80102	001	Adams	08	CO	330	265	11	21	47	45	11	0
80103	001	Adams	08	CO	199	118	0	12	25	24	0	0
80104	035	Douglas	08	CO	1,767	1,634	11	75	210	199	11	11
80105	005	Arapahoe	08	CO	128	70	11	11	22	20	0	11
80106	039											
80107	039											
80108	035											
80109	035											
80110	005											
80111	005											
80112	006											
80113	006											



<http://geohealth.hhs.gov/arctgis/home/>

Planning Today for Rebuilding Tomorrow:  
RESILIENCY & RECOVERY IN THE 21ST CENTURY

# HHS emPOWER Initiative State Health Department De-identified Emergency Planning Dataset



Planning Today for Rebuilding Tomorrow:  
RESILIENCY & RECOVERY IN THE 21ST CENTURY

PREPAREDNESSSUMMIT.ORG

@PREPSUMMIT #PREP16

NewYork\_NY\_CMSData\_De\_Identified\_SCZ\_2016\_01.xlsx - Microsoft Excel

HHS emPOWER Initiative - January 2016 Update  
State of New York  
De-identified Aggregated U.S. State, County, Zip Code

**Table of Contents**

- Data Overview
- Reference Dates
- Data Description
- Notes
- State Level Data
- Geographic Indicators: State (Two-letter abbreviation)
- County Level Data
- Geographic Indicators: County FIPS Code, County Name, State FIPS Code, State (Two-letter abbreviation), Number of Zip Codes in County
- Zip Code Level Data
- Geographic Indicators: Zip Code, County FIPS Code, County Name, State FIPS Code, State (Two-letter abbreviation)
- Totals: Medicare Beneficiaries in Territory/State, Medicare Fee-for-Service Beneficiaries (Part A/B/C) in State, Medicare Advantage Beneficiaries (Part C) in State, Dual-Eligible Medicare Beneficiaries in Territory/State
- Residence Indicators: Population of Beneficiaries at Home\*\* with a Residential Address, not P.O. Box or "Unknown," in the State
- At Risk Populations\*: In-Facility ESRD, Oxygen Services (Tank), Home Health Services, Power Dependent (All DME)\*\*, Oxygen Concentrators, Ventilators, Enteral Feeding, IV Infusion Pumps, Suction Pumps, Air Home ESRD, Motorized Wheelchairs or Scooters, Electric Beds
- Lookback Periods: 3 months, 13 months, Varied, 36 months, 13 months, 13 months, 13 months, 13 months, 13 months, 13 months
- De-identification Method/Privacy Protection: Removed all personal identifiers and information, Aggregated data to the territory/state level, Masked all data variables with a cell size between 1-10 to 11, Aggregated data to the territory/state level using sum of actual and masked zip code values for territories/states with only 1 masked zip code.

\* Cells with counts between 1-10 are masked to 11  
\*\* At Home indicates not a resident of a nursing facility or long-term care  
\*\*\* The Power Dependent (All DME) is a total count of individuals who have a claim for an oxygen concentrator in the last 36 months, a ventilator, enteral feeding, IV infusion pump, suction pump, motorized wheelchair, scooter, or electric bed in the last 13 months, or at-home ESRD in the last 3 months. Individuals are counted once regardless of how many types of DME they utilize.

**Menu** | Data Overview | Parent-Child Zip Code Mapping | State Actual Data | County De-Identified Data | Zip Code De-Id

NewYork\_NY\_CMSData\_De\_Identified\_SCZ\_2016\_01.xlsx - Microsoft Excel

HHS emPOWER Initiative - January 2016 Update  
Data Overview

**REFERENCE DATES**

Category	Description	MA data as of	FFS data as of
Enrollment and Death	We maintain the Medicare population beneficiaries alive as of the most recent Medicare Enrollment Database (EDB) available. We additionally restrict to beneficiaries who are enrolled in either original Medicare (Part A/B), also known as fee-for-service or FFS, or Medicare Advantage (Part C), as of the most recent month available in the EDB.	1/2/2015	1/2/2015
Nursing home	Nursing home residence is determined by using a combination of nursing home-related Medicare FFS/Medicare Advantage claims and the Long-Term Care Case Minimum Data Set (MDS) assessments as of this date.	10/2/2015	10/2/2015
Durable Medical Equipment Users	Power-dependent durable medical equipment use is determined by the presence of Medicare FFS/Medicare Advantage claims during various lookback periods, all ending on this date.	12/25/2015	12/25/2015
End-Stage Renal Disease (ESRD)	ESRD patients are identified as receiving in-facility dialysis treatment or at-home dialysis DME by the presence of Medicare FFS claim/Medicare Advantage in the 3 months prior to this date.	12/25/2015	12/25/2015

**DATA DESCRIPTION**

**End-Stage Renal Disease (ESRD) - In-Facility Dialysis Data:** This data is comprised of all Medicare FFS and Medicare Advantage beneficiaries that have been identified as having received dialysis treatment in an outpatient facility in the past 3 months.

**Oxygen Services (Tank) Data:** This data is comprised of all Medicare FFS and Medicare Advantage beneficiaries that have been identified as living at home (i.e., not in a Long Term Care facility/Nursing Home) with a rental claim for the specified equipment. The rental cap period is 36 months. Oxygen tanks contain oxygen and provide supplemental oxygen required for certain respiratory conditions.

**Home Health Services Data:** This data is comprised of all Medicare FFS and Medicare Advantage beneficiaries that have been identified as living at home (i.e., not in a Long Term Care facility/Nursing Home) with a rental claim for the specified equipment. Home health visits can be for intermittent skilled nursing care, physical therapy, speech-language pathology services, or continued occupational therapy services.

**Power-dependent DME Data:** This data is comprised of all Medicare FFS and Medicare Advantage beneficiaries that have been identified as living at home (i.e., not in a Long Term Care facility/Nursing Home) with a rental claim for the specified equipment. The reimbursement cap period for most types of DME is 13 months. The only exceptions are oxygen concentrators and air-home dialysis.  
\* Oxygen concentrators have a 36 month rental cap.  
\*\* At-home dialysis is identified through FFS/MA claims indicating receipt of dialysis treatment at home, not through FFS/MA DME claims. It uses a 3 month lookback. Medicare requires that a dialysis facility be responsible for providing dialysis services to all patients receiving dialysis at home should their equipment not function.

**Additional DME Information:**  
An **oxygen concentrator** extracts and concentrates oxygen from the air and delivers it to the patient via tubes or masks. Concentrators may be used to provide life-maintaining oxygen 24-7 or in some cases are used during different periods of day to provide supplemental oxygen required for certain respiratory conditions.  
\* A **ventilator** provides life-maintaining oxygen for an individual 24-7.  
An **enteral feeding** tube is a medical device used to provide nutrition to patients who cannot obtain nutrition by mouth, are unable to swallow safely, or need nutritional supplementation.  
An **IV infusion pump** is used to deliver fluids, medication, or nutrients into a patient's circulatory system. Often, they are used to deliver antibiotics, chemotherapy drugs, and pain relievers into a patient's body in controlled amounts.  
A **suction pump** is a medical device used by those who have difficulty raising or clearing mucosal secretions inside the air passages. They are often prescribed for conditions pertaining to the passages, the throat or mouth, dysfunction of the respiratory muscles, or tracheostomy.  
A **motorized wheelchair or scooter** is useful for those unable to propel a manual wheelchair. They are used by both people with mobility impairments as well as those with cardiovascular or fatigue-based conditions.  
An **electric bed** is a bed designed with features including adjustable height for the entire bed, the head, and the feet, adjustable side rails, and electronic buttons to operate both the bed and other nearby electronic devices.  
For more information on ESRD at-home dialysis, please see "At-home dialysis" description above.

**NOTES**

- \* Power-dependent medical equipment users are included in counts only if they are not residing in a nursing home.
- \*\* All cells with values from 1-10 have been replaced (masked) with 11.
- \*\* County level summary counts reflect sums of masked and unmasked zip codes.
- \* Territory/state territory counts reflect:
- For territories/states that have contain zero or more than one masked zip code - actual totals.
- For territories/states with exactly one masked zip code - sum of the masked and unmasked zip codes.
- Sum that include exactly one masked zip code are indicated in the State Actual Data tab by an asterisk.

**Zip Codes:**  
Zip codes that do not map to a geographical area in the Homeland Security Infrastructure Program (HSIP) do not appear individually in the datasets. Most of these zip codes are classified P.O. Box zip codes, though in some U.S. Territories these include residential zip codes with a very high prevalence of P.O. Boxes. These zip codes, called child zip codes, are assigned to a parent zip code that encloses a large geographical area. Since these child zip codes do not appear in the Zip Code De-identified tab of this workbook, their totals are added to the parent zip code that encompasses them.

**Menu** | Data Overview | Parent-Child Zip Code Mapping | State Actual Data | County De-Identified Data | Zip Code De-Identified

Menu Tab

Data Overview Tab

# HHS emPOWER Initiative State Health Department De-identified Emergency Planning Datasets



Planning Today for Rebuilding Tomorrow:  
RESILIENCY & RECOVERY IN THE 21ST CENTURY

PREPAREDNESSUMMIT.ORG

@PREPSUMMIT #PREP16

NewYork\_NY\_CMSData\_De\_Identified\_SCZ\_2016\_01.xlsx - Microsoft Excel

File Home Insert Page Layout Formulas Data Review View Acrobat

Clipboard Font Alignment Number Styles Cells Editing

A1

HHS emPOWER Initiative - January 2016 Update  
De-Identified Aggregated U.S. State

State	# Medicare Beneficiaries in State	# Medicare Beneficiaries by Plan/Enrollment Type			Demographic Information		Services	Services	Services	All DME	Durable Medical Equip	
		# Medicare Fee-for-Service Beneficiaries [Part A/Part B] in State	# Medicare Advantage Beneficiaries [Part C] in State	# Dual-Eligible Medicare Beneficiaries in State	Population of Beneficiaries at Home with a Residential Address, not P.O. Box or Unknown in State	# In-Facility ESRD Dialysis (3 months)	# O2 services [tanks] (13 months)	# Home health (3 months)	Electricity-Dependent DME	# O2 concentrators (36 months)	# Ventilators (13 months)	
NY	3,030,440	1,778,518	1,251,922	787,265	2,787,435	18,690	36,600	52,964	105,075	77,912	2,060	

Ready

Menu Data Overview Parent-Child Zip Code Mapping State Actual Data County De-Identified Data Zip Code De-Identified Data

State Tab

# HHS emPOWER Initiative State Health Department De-identified Emergency Planning Dataset



NewYork\_NY\_CMSData\_De\_Identified\_SCZ\_2016\_01.xlsx - Microsoft Excel

File Home Insert Page Layout Formulas Data Review View Acrobat

Normal Page Layout Page Break Preview Custom Views Full Screen Ruler Formula Bar Gridlines Headings Zoom 100% Zoom to Selection New Window Arrange All Freeze Panes Split View Side by Side Synchronous Scrolling Reset Window Position Save Workspace Switch Windows Macros

N3

HHS emPOWER Initiative - January 2016 Update  
De-Identified Aggregated U.S. County

Note: Every Column is Sortable

County FIPS Code	County	State FIPS Code	State	# Zip Codes in County	# Medicare Beneficiaries in County	Population or Beneficiaries at home with a Residential Address, no P.O. Box or	Services		Services		Services		All DME	
							# In-Facility ESRD [3 months]	# Masked Zip Codes in County	# O2 Services [Tanks]	# Masked Zip Codes in County	# Home Health [3 months]	# Masked Zip Codes in County	# Electricity-Dependent DME	# Masked Zip Codes in County
001	Albany	36	NY	33	47,313	43,705	400	13	807	12	702	12	2,007	9
003	Allegany	36	NY	25	8,881	7,173	132	12	362	18	315	19	688	10
005	Bronx	36	NY	25	171,062	159,640	1,843	2	1,036	2	2,606	0	3,798	0
007	Broome	36	NY	22	40,239	37,515	252	11	836	6	609	12	2,146	5
009	Cattaraugus	36	NY	27	15,902	13,499	210	18	495	14	332	16	1,194	7
011	Cayuga	36	NY	18	14,175	12,351	144	10	417	11	475	11	905	5
013	Chautauqua	36	NY	36	28,003	23,984	291	21	669	17	620	21	1,843	10
015	Chemung	36	NY	15	17,488	16,210	77	7	400	8	382	10	1,307	1
017	Chenango	36	NY	19	11,104	8,982	143	13	366	11	173	11	845	5
019	Clinton	36	NY	24	16,254	13,876	208	16	430	14	447	14	1,025	5
021	Columbia	36	NY	28	13,121	9,377	176	14	376	21	289	20	628	13
023	Cortland	36	NY	8	8,014	6,950	54	3	260	3	185	4	585	2
025	Delaware	36	NY	31	9,765	7,130	176	16	399	23	337	26	739	13
027	Dutchess	36	NY	30	50,234	44,696	368	15	700	15	912	10	1,543	4
029	Erie	36	NY	64	169,091	161,137	982	24	2,459	15	2,364	16	7,571	8
031	Essex	36	NY	28	7,548	4,939	165	15	316	22	290	21	458	13
033	Franklin	36	NY	19	10,097	8,144	121	11	360	12	183	14	772	6
035	Fulton	36	NY	7	10,918	9,153	63	4	351	2	166	4	793	1
037	Genesee	36	NY	14	11,279	10,171	121	8	276	8	221	11	653	1
039	Greene	36	NY	33	10,218	7,256	193	16	353	29	298	20	600	20
041	Hamilton	36	NY	10	1,408	285	44	7	110	10	77	7	132	8
043	Herkimer	36	NY	37	12,379	10,459	147	12	321	8	187	9	701	5
045	Jefferson	36	NY	37	17,646	14,112	289	22	541	24	431	29	1,102	15
047	Kings	36	NY	40	308,338	295,939	3,097	0	2,325	0	5,872	0	7,957	0
049	Lewis	36	NY	14	4,928	3,457	55	5	155	10	136	11	285	6
051	Livingston	36	NY	19	11,717	10,214	165	15	261	10	228	11	546	4
053	Madison	36	NY	19	11,857	10,266	132	12	305	13	231	8	651	7
055	Monroe	36	NY	44	132,421	125,452	916	13	1,858	6	2,551	4	4,500	3
057	Montgomery	36	NY	13	11,709	10,108	129	9	289	9	252	8	637	2
059	Nassau	36	NY	69	223,349	213,098	1,345	28	1,890	19	4,409	6	5,790	5
061	New York	36	NY	51	234,274	222,091	1,441	20	1,454	9	5,125	5	5,081	4
063	Niagara	36	NY	19	43,087	40,445	280	11	868	3	708	6	2,370	2
065	Oneida	36	NY	45	46,317	40,779	438	25	1,084	26	771	31	2,538	11
067	Onondaga	36	NY	43	81,651	76,399	572	19	1,363	4	1,818	5	4,281	3
069	Ontario	36	NY	15	20,573	18,748	143	10	363	4	338	9	772	3
071	Orange	36	NY	42	53,645	46,240	535	32	811	26	986	22	1,782	11

Menu Data Overview Parent-Child Zip Code Mapping State Actual Data County De-Identified Data Zip Code De-Identified

Ready 60%

Planning Today for Rebuilding Tomorrow:  
RESILIENCY & RECOVERY IN THE 21ST CENTURY

County Tab

# HHS emPOWER Initiative State Health Department De-identified Emergency Planning Dataset



Planning Today for Rebuilding Tomorrow:  
RESILIENCY & RECOVERY IN THE 21ST CENTURY

PREPAREDNESSUMMIT.ORG

@PREPSUMMIT #PREP16

NewYork\_NY\_CMSTData\_De\_Identified\_SCZ\_2016\_01.xlsx - Microsoft Excel

File Home Insert Page Layout Formulas Data Review View Acrobat

Clipboard Font Alignment Number Styles Cells Editing

Calibri 11

General Percent 3 3 Percent 4 Percent 5 Normal

AutoSum Fill Sort & Filter Find & Select

A1

B C D E F G H I J K L M N O

1

2 HHS emPOWER Initiative - January 2016 Update

3 De-Identified Aggregated U.S. Zip Code - ESRD-Dialysis and Electricity-Dependent DME

Zip Code	County FIPS Code	County	State FIPS Code	State	# Medicare Beneficiaries in Zip Code	Population of Beneficiaries at home with a Residential Address, not P.O. Box or Unknown in Zip Code	Services # In-Facility ESRD Dialysis (3 months)	Services # O2 services [tanks] (13 months)	Services # Home health (3 months)	All DME # Electricity-Dependent DME	# O2 concentrators (36 months)	# Ventilators (13 months)	# Enteral Feeding (13 months)	Du
06390	103	Suffolk	36	NY	50	11	0	0	0	0	0	0	0	
10001	061	New York	36	NY	4,797	4,688	27	30	94	106	52	11	17	
10002	061	New York	36	NY	15,364	15,013	101	85	323	373	140	11	77	
10003	061	New York	36	NY	7,360	5,783	44	41	188	168	79	11	11	
10004	061	New York	36	NY	652	612	11	11	11	19	11	11	11	
10005	061	New York	36	NY	215	188	0	11	11	11	11	0	11	
10006	061	New York	36	NY	71	70	0	0	0	11	11	0	0	
10007	061	New York	36	NY	632	504	11	11	11	18	11	11	11	
10009	061	New York	36	NY	8,938	8,497	67	47	207	193	79	11	22	
10010	061	New York	36	NY	4,013	3,842	12	17	116	62	32	11	11	
10011	061	New York	36	NY	6,783	6,493	26	45	157	136	82	11	11	
10012	061	New York	36	NY	2,527	2,460	14	11	62	39	18	0	11	
10013	061	New York	36	NY	3,727	3,573	12	21	56	61	37	11	11	
10014	061	New York	36	NY	3,859	3,746	11	14	75	67	35	11	11	
10016	061	New York	36	NY	6,388	5,936	21	35	154	140	68	11	12	
10017	061	New York	36	NY	2,354	2,119	11	13	46	40	20	11	11	
10018	061	New York	36	NY	1,134	1,002	11	11	29	25	11	0	11	
10019	061	New York	36	NY	5,557	5,370	24	39	134	118	68	11	11	
10020	061	New York	36	NY	36	36	0	0	0	0	0	0	0	
10021	061	New York	36	NY	8,189	7,888	20	43	203	169	98	11	15	
10022	061	New York	36	NY	6,836	6,534	11	40	165	123	75	11	11	
10023	061	New York	36	NY	10,696	10,394	25	50	274	211	101	11	15	
10024	061	New York	36	NY	10,114	9,831	26	54	249	196	100	11	11	
10025	061	New York	36	NY	15,773	14,836	84	90	349	322	165	11	16	
10026	061	New York	36	NY	3,736	3,536	46	39	68	104	63	11	11	

Menu Data Overview Parent-Child Zip Code Mapping State Actual Data County De-Identified Data Zip Code De-Identified Data

Ready 85%

Zip Code Tab



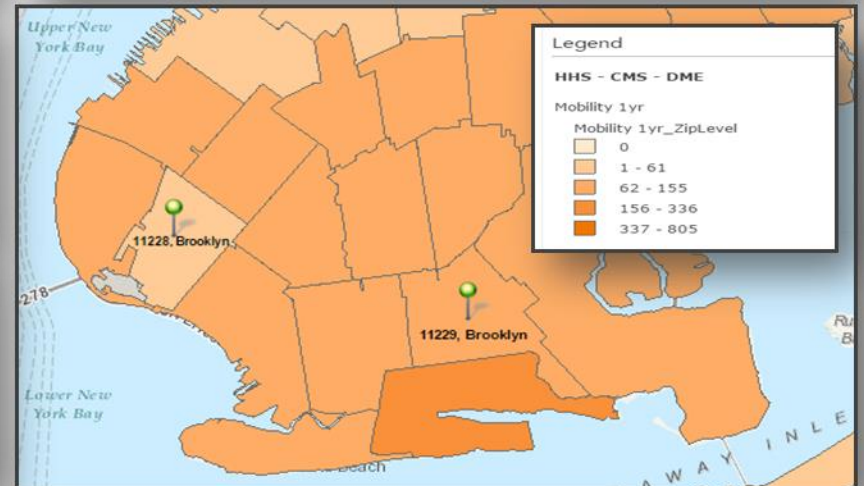
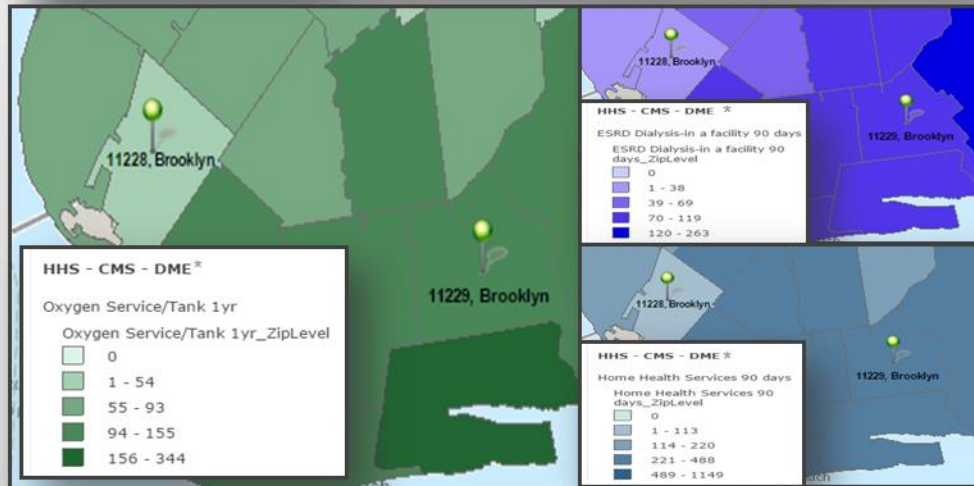
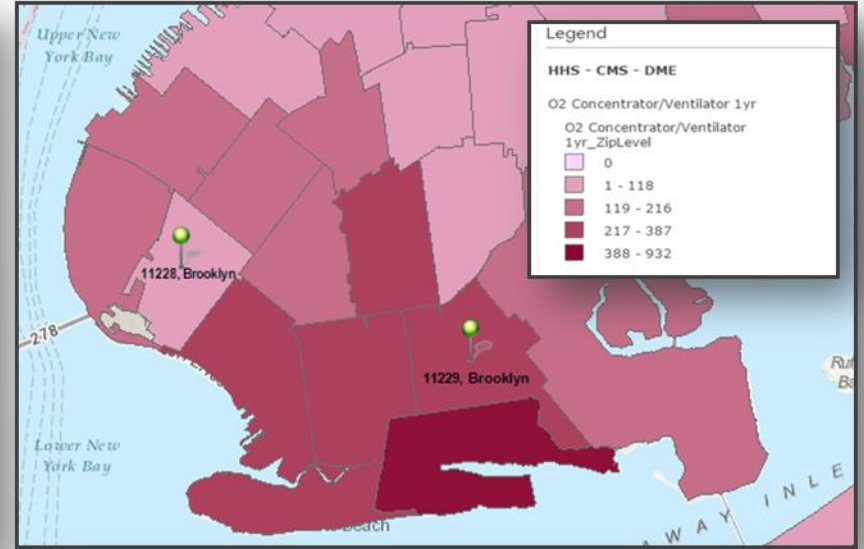
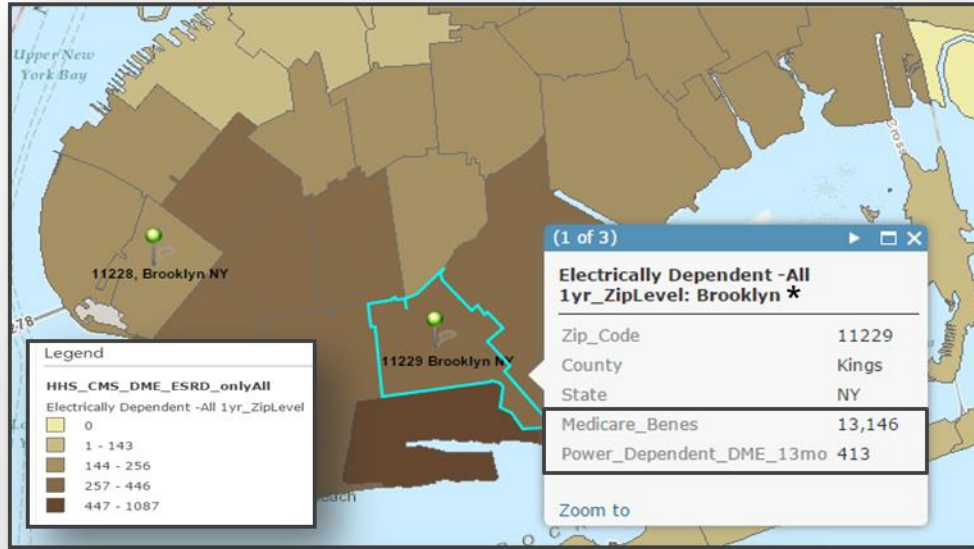
# HHS EmPOWER Data At Work In GeoHealth Informing Local Planning Scenarios & Response Decision Making



Planning Today for Rebuilding Tomorrow:  
RESILIENCY & RECOVERY IN THE 21ST CENTURY

PREPAREDNESSUMMIT.ORG

@PREPSUMMIT #PREP16



\* Adjusted Totals- Medicare beneficiaries are only counted once even if they have multiple types of durable medical equipment (DME) or healthcare service

# HHS emPOWER Initiative

## Emergency Response Outreach Individual Dataset



Planning  
Today for  
Rebuilding  
Tomorrow:  
RESILIENCY &  
RECOVERY  
IN THE 21ST  
CENTURY

PREPAREDNESSUMMIT.ORG

@PREPSUMMIT #PREP16

- Purpose is to conduct outreach prior to, during, or after an incident, public health emergency, or disaster that may adversely impact at-risk populations
- Examples of individual outreach use cases:
  - HHS approved preparedness exercises:
    - *City of New Orleans, State of Arizona, Broome County/New York State, New York City\**
  - HHS approved emergencies:
    - *Flint Michigan Water Emergency, Virginia and NYC Winter Storm Jonas Emergency, City of New Orleans Boil Water Emergency, Dialysis/Ice Storm Emergency*
    - *Future Responses*
- Public health authorities that meet HIPAA requirements can submit a request to HHS via their ASPR Regional Administrator (RA)/Emergency Coordinators (RECs)



# HHS emPOWER Initiative Public Health Authority Emergency Response Outreach Individual Dataset (Sample)



Planning  
Today for  
Rebuilding  
Tomorrow:  
RESILIENCY &  
RECOVERY  
IN THE 21ST  
CENTURY

PREPAREDNESSUMMIT.ORG

@PREPSUMMIT #PREP16

Data\_Request\_Form\_w\_Templates\_2015\_03\_02\_Final.xlsx - Microsoft Excel

File Home Insert Page Layout Formulas Data Review View Acrobat

Clipboard Font Alignment Number Styles Cells Editing

Calibri 11

Normal Bad Good Neutral

122

1  
2 **HHS At-Risk Resiliency Initiative**  
3 **INDIVIDUAL LEVEL DATASET - Ventilator and Concentrator Individuals**  
4 **POPULATION** - Medicare population is restricted to alive beneficiaries as of November 2014 who are enrolled in Medicare Fee for Service parts A and B.  
5  
6  
7 **NOTE: All data are fictitious and used for illustrative purposes only**

Name		Other Information		Address Indicators			Address				
Initial Sorting Order	First Name	Last Name	Date of Birth	PO Box or Unknown Address	"Care Of" Indicator	Salutation	Street Address 1	Street Address 2	City	State	Zip Code N
1	Anne	Smith	November 4, 1944	0	0	Adm Park Manor Home For A. Smith	57 Coney Island Av		Brooklyn	NY	Brooklyn
2	Amy	Brown	February 19, 1955	0	0	C/O Geriatric Care Cntr	150 Dean Street		Brooklyn	NY	Brooklyn
3	John	Taylor	December 20, 2028	0	1		1600 40 St		Brooklyn	NY	Brooklyn
4	Jane	Doe	March 4, 1966	0	1		1800 Bay Ridge Ave		Brooklyn	NY	Brooklyn
5	Robert	Walker	May 20, 1930	0	0		1900 63rd St	First Floor	Brooklyn	NY	Brooklyn
6	Mary	Johnson	September 14, 2012	1	0		17 212th Place		Queens Village	NY	Queens Vill
7	William	Jones	December 1, 1933	0	0	Dev Ctr For David Robinson	180 E 205 St		Bronx	NY	Bronx
8	David	Robinson	July 6, 1936	0	0		PO Box 280507		Bronx	NY	Bronx
9	Carol	Davis	July 24, 1933	1	0		PO Box 190-144		Brooklyn	NY	Brooklyn

Form Vent & O2 Conc Indv Level Vent O2 Conc Agg Zip Code Level ESRD Indv Level ESRD Agg Zip Code Level DME

# HHS emPOWER Initiative Emergency Response Outreach Individual Dataset Sample -Continued



Planning Today for Rebuilding Tomorrow:  
RESILIENCY & RECOVERY IN THE 21ST CENTURY

PREPAREDNESSUMMIT.ORG

@PREPSUMMIT #PREP16

Data\_Request\_Form\_w\_Templates\_2015\_03\_02\_Final.xlsx - Microsoft Excel

W22

HHS At-Risk Resiliency Initiative  
INDIVIDUAL LEVEL DATASET - Ventilators  
POPULATION - Medicare population is restricted  
NOTE: All data are fictitious and used for illustration

Name		Dual Eligibility	Nursing Home	Lookback Date Range									
				Ventilators	Oxygen Concentrators	Oxygen Services (Tanks)	Electric Beds [Secondary]	Motorized Wheelchairs/Scoters [Secondary]	IV Infusion Pumps [Secondary]	Suction Pumps [Secondary]			
Initial Sorting Order	First Name	Last Name	Zip Code	Parent Zip Code	Currently Dual Eligible?	Currently in Nursing Home?	In the past 13 months	In the past 36 months	In the past 13 months	In the past 13 months	In the past 13 months	In the past 13 months	In the past 13 months
1	Anne	Smith	11201		Yes			Yes					
2	Amy	Brown	11201					Yes		Yes	Yes		
3	John	Taylor	11241	11201				Yes		Yes			
4	Jane	Doe	11242	11201	Yes		Yes					Yes	
5	Robert	Walker	11242	11201	Yes			Yes		Yes	Yes		
6	Mary	Johnson	11427				Yes	Yes	Yes				Yes
7	William	Jones	10499	10465				Yes		Yes		Yes	
8	David	Robinson	10499	10465			Yes			Yes			
9	Carol	Davis	11239					Yes		Yes			

Form Vent & O2 Conc Indv Level Vent O2 Conc Agg Zip Code Level ESRD Indv Level ESRD Agg Zip Code Level DME

# HHS emPOWER Initiative

## Emergency Response Outreach Individual Dataset Sample-Continued

Data\_Request\_Form\_w\_Templates\_2015\_03\_02\_Final.xlsx - Microsoft Excel

File Home Insert Page Layout Formulas Data Review View Acrobat

Clipboard Font Alignment Number Styles Cells Editing

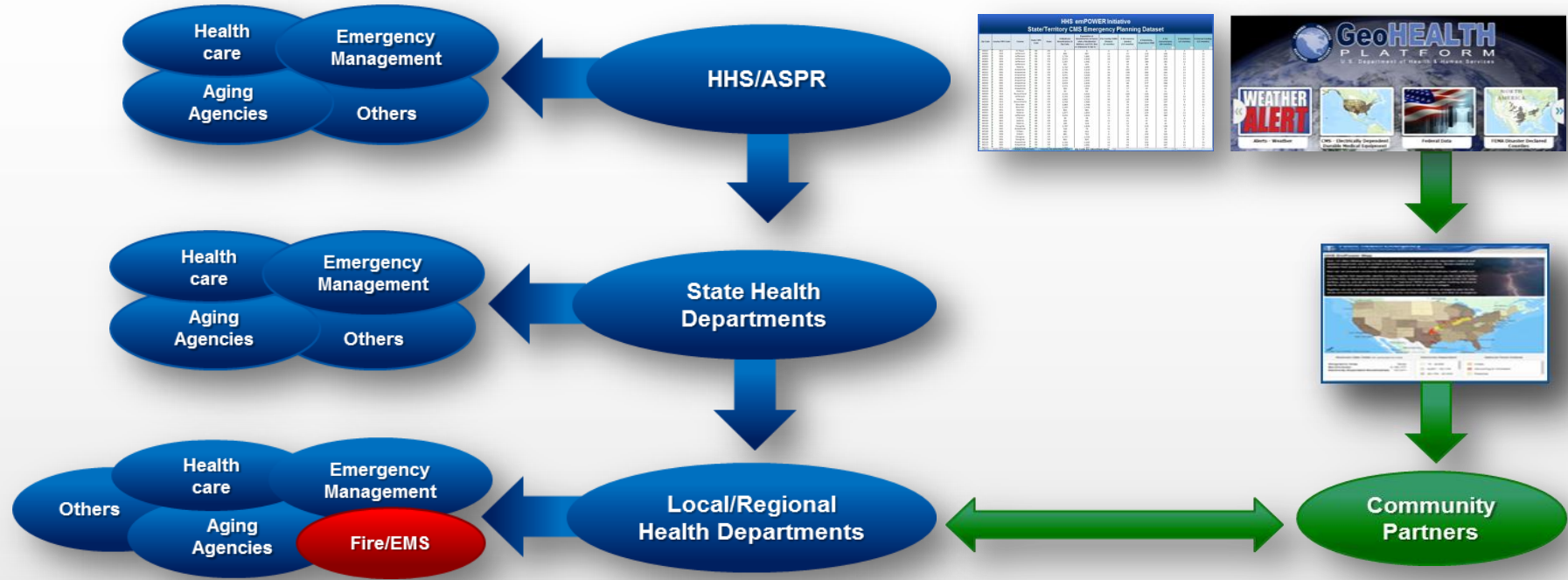
Y25

HHS At-Risk Resiliency Initiative INDIVIDUAL LEVEL DATASET - Oxygen POPULATION - Medicare population is restricted												
Lookback Date Range						Lookback Date Range						
9/26/14 - 12/26/14						9/26/14 - 12/26/14						
NOTE: All data are fictitious and used for illustration only												
Name			DME Supplier				Home Health Agency				Most Recent Institution	
Initial Sorting Order	First Name	Last Name	Name	Address	Zip Code	Phone Number	Name	Address	Zip Code	Phone Number	Type of Institution	
28	Anne	Smith	Respiratory Devices Inc	1 N Main St	11111	(333) 333-3333	View Home Health	384 Park Street	33333	(333) 383-1932	Outpatient Visit	
29	Amy	Brown	Medical Supply Inc	2 Second St	22222	(999) 999-9999	Home Care Services	3929 1st Ave	44444	(399) 331-3913	Hospice	
30	John	Taylor	Healthcare Supplier, LLC	3 3rd Ave	33333	(222) 111-3333						
31	Jane	Doe	Healthcare Supplier, LLC	3 3rd Ave	33333	(222) 111-3333	Hospital Stay					
32	Robert	Walker	Medical Equipment, Inc	4 S Main St	44444	(444) 443-3333						
33	Mary	Johnson	Medical Equipment, Inc	4 S Main St	44444	(444) 443-3333						
34	William	Jones										
35	David	Robinson	Healthcare Provider, LLC	3 3rd Ave	55555	(222) 111-3333						
36	Carol	Davis	Healthcare Provider, LLC	3 3rd Ave	55555	(222) 111-3333						

ESRD Indv Level ESRD Agg Zip Code Level DME Indv Level DME Agg Zip Code Level O2 Srvc Indv Level O2 Srvc Agg Zip Code Level Mobility Indv Level Mobility Agg Zip Code Level

Ready 85%

# HHS emPOWER Initiative Integrating Public Health, Emergency Management, Healthcare, & Aging Systems



**Pre-Event Emergency Planning (De-identified):**

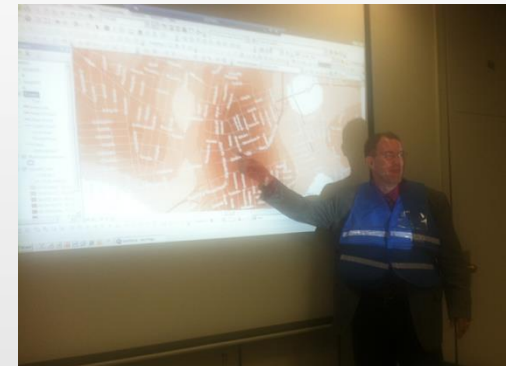
- Population-Based Situational Awareness
- Emergency Planning Activities & Plans
- Develop Systems, Processes & Triggers
- Identify Resources for Scenarios
- Sets Stage for Life-Saving Outreach
- Other Considerations

**Emergency Response & Notification (De-identified/Individual):**

- Activate Emergency Plans
  - Population Based
  - Individual Outreach
- Deploy Emergency Response Assets
- Activate Communications Network
- Other Considerations

## HHS emPOWER Data in Action

How can emPOWER data and tools inform and support emergency preparedness, response, recovery and resilience activities in your communities?



# Disasters Happen Locally



Planning  
Today for  
Rebuilding  
Tomorrow:

RESILIENCY &  
RECOVERY  
IN THE 21ST  
CENTURY

PREPAREDNESSUMMIT.ORG

@PREPSUMMIT #PREP16

## Major natural disasters that have impacted Broome County, New York:

- 2006 Flood
- 2011 Flood

## Challenges faced prior to, during and after the disasters:

- Identifying the needs and locations of populations/ individuals with access and functional needs
- Healthcare infrastructure and continuity of healthcare
- Hospital /Emergency Medical Services (EMS) Surge
- Determining medical and other needed supplies
- Power restoration
- Evacuation needs
- Shelter needs



Copyright 2006 Silver Wings Aerial Photography

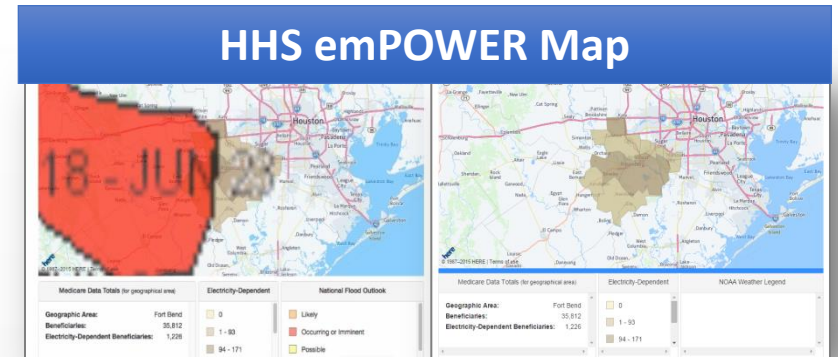


Copyright 2011 Bill Walsh



# How is the HHS emPOWER Map helping Broome County?

- HHS emPOWER Map provides a starting point for estimating the electrically-dependent population within our community
- Informing planning activities to better support:
  - Community awareness and support
  - Evacuation
  - Medical and other supplies
  - Hospital/ EMS system surge
  - Shelter locations
  - Populations affected
- Informing communication activities:
  - Targeted public communications
  - Foster 's community discussion, engagement, and understanding



HHS emPOWER Map- Fort Bend, Texas  
Electricity-Dependent & NOAA Flood Outlook, 2015



Courtesy of Bill Walsh

Copyright 2011 Bill Walsh

# How is the HHS emPOWER de-identified data helping Broome County?

- **HHS emPOWER de-identified data can:**

- Enhance our population-based situational awareness of healthcare and electricity-dependent populations
- Inform emergency planning activities to identify needs, better develop processes & triggers, identify community resources
- Enhance understanding and integration of public health, emergency management, healthcare and aging service responses
  - Better anticipate where we may need to anticipate evacuation needs and life-saving outreach to at-risk populations.
  - Anticipate potential surge on our healthcare and EMS systems
  - Better identify locations and needs for shelters, medical supplies, and other resources



Copyright 2006 Silver Wings Aerial Photography



# How is the HHS emPOWER individual level data helping Broome County?



- Individual data was exercised in April 2014
- Future emergency response uses, include but are not limited to:
  - Emergency warnings
  - Field response outreach
  - Evacuation

Planning Today for Rebuilding Tomorrow:  
RESILIENCY & RECOVERY IN THE 21ST CENTURY

PREPAREDNESSUMMIT.ORG

@PREPSUMMIT #PREP16



Copyright 2011 Bill Walsh



# Overview of our Incident Command Structure for Broome County At-Risk Exercise

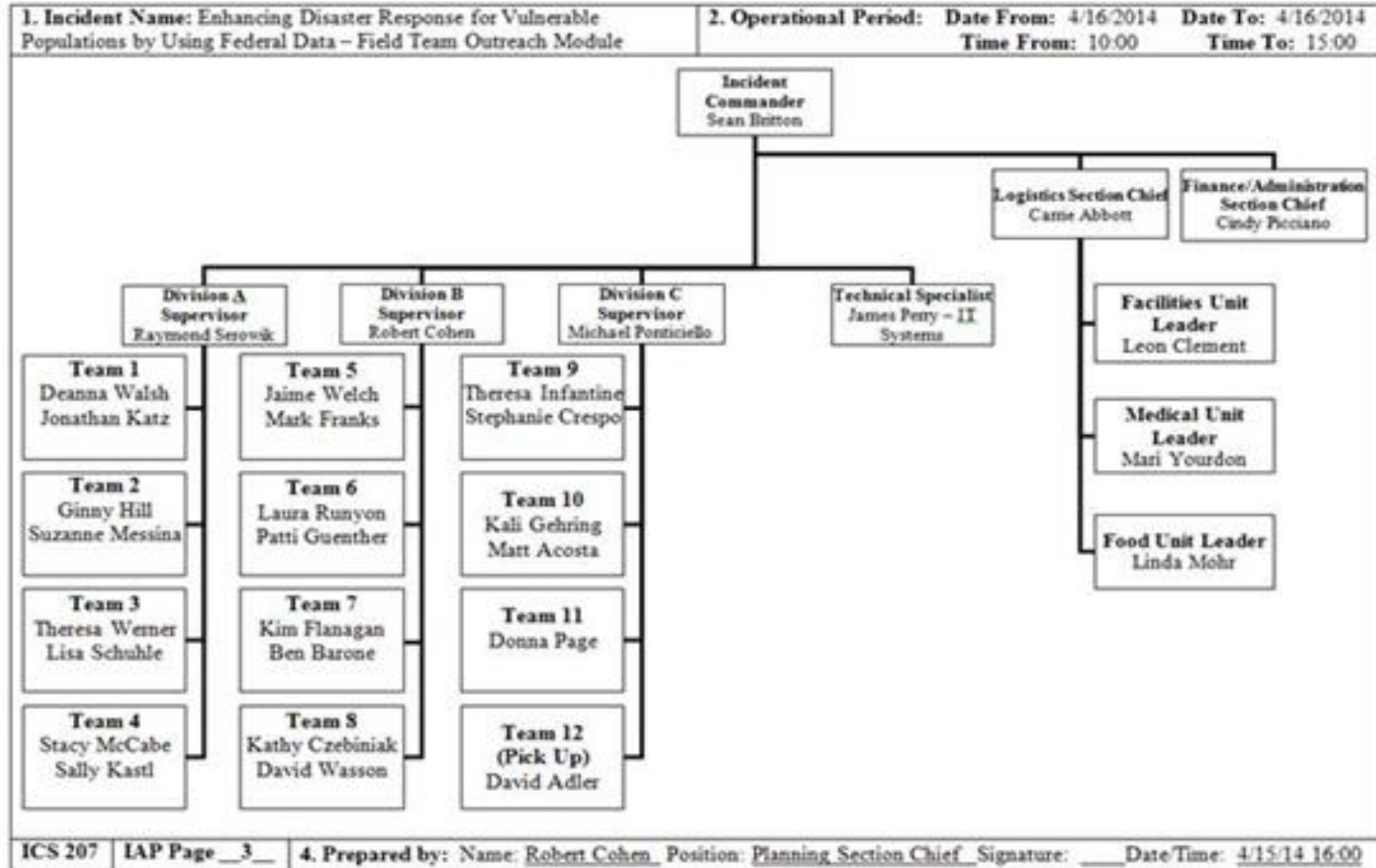


Planning Today for Rebuilding Tomorrow:  
RESILIENCY & RECOVERY IN THE 21ST CENTURY

PREPAREDNESSUMMIT.ORG

@PREPSUMMIT #PREP16

Incident Organization Chart (ICS 207)




# Questions?



Planning  
Today for  
Rebuilding  
Tomorrow:

RESILIENCY &  
RECOVERY  
IN THE 21ST  
CENTURY

PREPAREDNESSUMMIT.ORG

 @PREPSUMMIT #PREP16



## Contact Information

**Kristen P. Finne, B.A.**

Lead, HHS emPOWER Initiative

Senior Policy Analyst, Division of Health Systems Policy

Office of the Assistant Secretary for Preparedness and Response

U.S. Department of Health and Human Services

Office: 202-691-2013

Email: [kristen.finne@hhs.gov](mailto:kristen.finne@hhs.gov)

HHS emPOWER Map: [www.phe.gov/empowermap](http://www.phe.gov/empowermap)

HHS GeoHealth emPOWER Rest Service: [https://geohealth.hhs.gov/dataaccess/rest/services/CMS\\_DME/HHS\\_CMS\\_DME\\_ESRD\\_onlyAll/MapServer](https://geohealth.hhs.gov/dataaccess/rest/services/CMS_DME/HHS_CMS_DME_ESRD_onlyAll/MapServer)

HHS GeoHealth Platform: [www.geohealth.hhs.gov](http://www.geohealth.hhs.gov)

HHS Technical Resources Assistance Center and Information Exchange (TRACIE) <https://asprtracie.hhs.gov/>

HHS Response and Recovery Resources Compendium: <http://www.phe.gov/emergency/hhscapabilities/Pages/default.aspx>

**Sean J. Britton, NRP, CPH, CEM**

Deputy Director of Public Health

Deputy Emergency Medical Services Coordinator

Broome County Health Department

Office: 607-778-3944

Email: [sbritton@co.broome.ny.us](mailto:sbritton@co.broome.ny.us)

Website: <http://www.gobroomecounty.com/hd>

Facebook: [www.facebook.com/BroomeCountyHealth](http://www.facebook.com/BroomeCountyHealth)

Facebook: [www.facebook.com/BCOES](http://www.facebook.com/BCOES)



Planning  
Today for  
Rebuilding  
Tomorrow:  
RESILIENCY &  
RECOVERY  
IN THE 21ST  
CENTURY

PREPAREDNESSUMMIT.ORG

@PREPSUMMIT #PREP16